

# The Diseworth Dialogue



MARCH 2011

ISSUE No 163

Delivered free to households  
in Diseworth

<http://www.diseworth.org>

£1

# The Diseworth Dialogue

## COMMITTEE

**Chairman** Nicky Miller 814663  
**Vice Chair** Liz Jarrom 810358  
**Editor** Peggy Tudor 810780  
**Assistant Editor** Sue Brompton 850592

**Treasurer** Christine Agar 850181  
**Advertising** Victoria Britton  
**Production** Ruth Smith 811538  
**Minutes Secretary**  
**Founding Editor** Carly Snee

## Committee Members

Sue Bird, Gill Burrage, Jane Cunningham, Janet Fletcher, Linda Gaymer, Nikki Hening, Jim Snee, Julie Werb

## Delivery Team

**Leader** Linda Gaymer 812246  
Sue Bird, Norma Chapman, Nancy Cowley, Julie Doyle, Rosalyn Edwards, Jan Firth, Sue Hill, Sandie Moores, Pauline Needham, Sam Pass, Rosie Smith, Julie Werb

**Line Drawings** by Steven Allison

*Details of our committee meetings can be found in the diary section of the magazine.  
We extend an open invitation to members of the village to come to our meetings.*

## CONTRIBUTIONS

Please let us have your items for publication (this includes advertising) by the 7th of the month for the following month's issue.

Remember that we produce 2 double issues (July/August and December/January). **All contributions will be considered for publication.**

They can be delivered to any committee member or emailed to

**peggy.tudor@btinternet.com**

**ruth@airnig.co.uk** and

**sue@cbrompton.fsnet.co.uk** or via our

village web site at **www.diseworth.org** and **www.leicestershirevillages.com/**

**diseworth/**

Contributions for our dispatches page are most welcome. Share your news with the village - birthdays, weddings, anniversaries, congratulations etc. When contributing, please **include your name.**

We do need your name, but we won't publish it if that's your wish. If you're a child, our readers appreciate seeing your age too!

## Designed & produced by

Ruth Smith, [ruth@airnig.co.uk](mailto:ruth@airnig.co.uk)

01332 811538

**Printed** by Ashfield Screen Printing Ltd.  
[www.ashfieldsp.co.uk](http://www.ashfieldsp.co.uk)

## ADVERTISING

Advertisements in our Yellow Pages can be placed yearly or monthly according to your needs. Please contact **Victoria Britton** by email at  **victoria@pennline.co.uk**  or **01332 850184** for details.

## DISCLAIMER

Any views or opinions expressed within the pages of the *Diseworth Dialogue* are not necessarily those of the Editorial Team or Committee. All advertisements are accepted in good faith.

## OUR PRICING POLICY

We aim to be able to deliver one copy of the *Diseworth Dialogue* to each household in Diseworth. Our objective is to fund production through advertising, fund raising and voluntary contributions. We aim to deliver a quality publication which enriches village life and encourages such voluntary contributions, these we invite annually. Additional copies are available for purchase at 50p. If you know somebody living outside the village who would like to have a copy mailed on a subscription basis, please let us know. Mail subscription is £10 per year, including postage.

# Contents



## Regulars

Beat News	38
Book Review	22
Church News	6/12
Country Matters	14/15
Diseworth Diary	4
Disewired	45
Dispatches	36/37
Editor's Letter	5
Health Page	34
Millennium Meadow	15
Parish Council	39
Recycle Bin	46
Village Hall News	26/29

## Features

100 Years at Village Farm	20/21
Civil War in Diseworth	30/33
Diseworth Guides and Brownies	40/41
Family History	18/19
Home Composting	16/17
Obituary - Leah Ross	11
Rainbows 'Thank You'	13
Review - Goldie Locks and the Three Musketeers	23/25
Wings	35

## Notices & Ads

Beat Surgery	38
Ceilidh Night	29
Community Bus	42
Digital Switchover Volunteers	44
Farmers' Market	4
Flower Workshops	37
Jon Boden in Concert	43
Plough Inn News	32
Spring Fayre	10
Table Tennis	37
Watercolour Painting Taster	28
Wicked Hathern Brewery Tasting	33
Women's Group AGM	43

# DISEWORTH DIARY

## MARCH

Tuesday	1 <sup>st</sup>	Zumba at the Village Hall 8.15pm – 9.15pm
Thursday	3 <sup>rd</sup>	Coffee Cakes & Computers at the Heritage Centre 10 – 12 noon
Thursday	3 <sup>rd</sup>	Parish Council Meeting, 7.30pm Long Whatton Community Centre
Saturday	5 <sup>th</sup>	Flower Arranging Workshop, Village Hall 2pm – 4pm
Monday	7 <sup>th</sup>	Discussion Group: What Price Longevity? 10a Lady Gate, 2pm
Tuesday	8 <sup>th</sup>	Zumba at the Village Hall 8.15pm – 9.15pm
Thursday	10 <sup>th</sup>	Coffee Cakes & Computers at the Heritage Centre 10am – 12 noon
Thursday	10 <sup>th</sup>	Diseworth Annual Parochial Church Meeting, 7.30pm in Church
Monday	14 <sup>th</sup>	Women's Group AGM Village Hall 8pm
Tuesday	15 <sup>th</sup>	Zumba at the Village Hall 8.15pm – 9.15pm
Wednesday	16 <sup>th</sup>	Public Meeting 'Leicestershire's green spaces' 7pm at Spital Park Pavillion, Castle Donington
Thursday	17 <sup>th</sup>	Coffee Cakes & Computers at the Heritage Centre 10am – 12 noon
Saturday	19 <sup>th</sup>	Ceilidh, with Irish band, Rabscallion and Hog Roast, Village Hall, Doors open 7.30pm
Tuesday	22 <sup>nd</sup>	Zumba at the Village Hall 8.15pm – 9.15pm
Thursday	24 <sup>th</sup>	Coffee Cakes & Computers at the Heritage Centre 10am – 12 noon
Saturday	26 <sup>th</sup>	Spring Fayre at the Parish Church 10am – 12 noon
Saturday	26 <sup>th</sup>	Watercolour 'Taster Session' 10am - 12 noon, Village Hall
Saturday	26 <sup>th</sup>	Flower Arranging Workshop Village Hall 2pm – 4pm
Sunday	27 <sup>th</sup>	Wicked Hathern Brewery Talk and Tasting Session, Village Hall 7.30pm

## APRIL

Saturday	2 <sup>nd</sup>	Free Flower Arranging Class, Village Hall, 10.30am - 11.30am
Wednesday	6 <sup>th</sup>	Beat Surgery, adjacent to Diseworth Village Hall. 10am - midday.
Thursday	7 <sup>th</sup>	Parish Council Annual Parish Meeting. 7.15pm Diseworth Village Hall
Friday	15 <sup>th</sup>	Beetle Drive at the Village Hall, fun for all the family. 6pm - 8pm
Sunday	17 <sup>th</sup>	Ballroom and Latin lesson - Taster session 7pm - 9pm

## MAY

Thursday	5 <sup>th</sup>	Jon Boden in Concert. Long Whatton Community Centre 7.30pm
Sunday	15 <sup>th</sup>	Singing for Fun Taster Session, Village Hall 6.30pm - 8pm

## JUNE

18<sup>th</sup> and 19<sup>th</sup>

Scarecrow Weekend and Civil War in Diseworth



### Castle Donington Farmers' Market

St Edwards C of E Primary School, The Dovecote,  
 12th March                      2nd Saturday of every month  
 9th April                              from 9am - 12.30pm

# Welcome

## to the March 2011 issue of the *Diseworth Dialogue*



We have another packed magazine for you this month with many varied and interesting articles.

I feel I must start with some exciting news; the English Civil War is coming to Diseworth! If you turn to page 28, you will find details of this year's Scarecrow Weekend, which this year, will feature The Sealed Knot, a Civil War re-enactment group who will be staying in Diseworth over the weekend. It is going to be a fantastic weekend and we are all being encouraged to dress our scarecrows as Roundheads and Cavaliers.

History seems to be the underlying theme of this issue as there are two other articles celebrating family history. Muriel Howe has written about taking part in the Family History for Beginners course at the Heritage Centre and the other article is about Village Farm which celebrates 100 years of family farming this month.

The Charnwood Community Theatre put on yet another fantastic show for us and you will find a review of their performance, along with some lovely photographs on page 21. Liz Jarrom also took a great photograph of an elusive Egret which she came across in their home field.

Now for some appeals. The Women's Group are holding a meeting to discuss their future on the 14<sup>th</sup> March and the Brownies desperately need new recruits or they face closure. This would be such a shame. See pages 39 and 41 for more information.

Finally, some alarming news has come to light. It appears that planning permission has been sought to erect solar panels in the big field on the right of Grimes Gate. WINGS have written an article about this planned development and we promise to keep you informed over the coming months.

I hope you enjoy this month's magazine. I'm off to brush up on the Civil War. Should I make a Roundhead scarecrow or a Cavalier scarecrow?.....

# *St Michael and All Angels Parish Church*

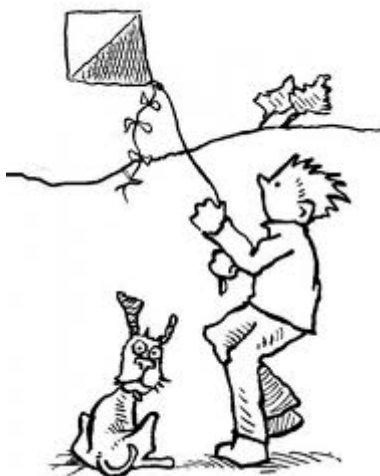


photograph Julia Silifoe

## *Pastoral Letter*

Even though it's March that's meant to 'Come in like a lion and go out like a lamb', as I write this letter in February the wind is roaring around outside. Twigs and branches are scattered about in the garden.

Quiet corners where the autumn leaves collected are ruffled and the dead leaves sent flying all over the place. The vicarage cats poke their noses outside and decide that inside is a far better option and curl up again by the fire. There are some hardy individuals who are outside and even some kite fliers. I have to confess, I find being out in the wind exhilarating. There is something to be said for that idea of 'blowing away the cobwebs'. I suppose too there are some who welcome the wind, especially those who generate electricity using a wind turbine. They must be rubbing their hands with glee at this weather.



In March this year Christians across the world will start their journey towards Easter. On the 8<sup>th</sup>, Shrove Tuesday (aka Pancake Day!) they'll have special meals to use up all the fun foods in the house before getting down to the serious business of entering the season of Lent. On the 9<sup>th</sup> many will go to church to take part in Ash Wednesday services.

The season of Lent is often seen as quite a sombre time of self denial in preparation for the great celebration of Easter. In this time people often give up chocolate or alcohol or some other pleasure. But increasingly people are looking for other more positive ways of preparing. So, for example some are setting out to read a particular book or books, others try to set out a programme of different things to do each day. These things range from the serious, 'Read the Psalms', to

# *St Michael and All Angels Parish Church*

## **TEAM RECTOR**

Revd Gill Turner-Callis      The Rectory, 24 Nottingham Road,  
Kegworth, Derby. DE74 2FH.      01509 673146  
e mail kandhtm@gmail.com

## **TEAM VICAR**

Revd Tony Edmonds      The Rectory, Presents Lane, Belton  
Leicestershire. LE12 9UN      01530 223447  
e mail t.e.edmonds@btconnect.com

## **READERS**

Mrs Celia Harris      01509 844141  
Mrs Nadine Hawkins      01509 646957  
Mrs Audrey Hunt      01509 646478

## **CHURCHWARDENS**

Mr David Bird      01332 810381  
Mrs Muriel Howe      01332 850338

Please note that Gill takes Monday as her  
day off and Tony has Friday as his day off.

For **Baptism** enquires, please contact Gill.  
Baptisms in the benefice occur on the first  
Sunday of the month in most of the churches  
on a first come first served basis.  
For **Funerals**, please contact Gill. The local  
undertakers have now been asked to contact  
Gill direct. Gill will then make arrangements  
for a member of the team to take the funeral.  
For **Wedding** enquiries and bookings, please  
contact Gill.

the generous, 'Give Blood', to the thoughtful, 'Have a 'don't moan' day', to the  
light hearted, 'Look out of the window'.



Why not set up your own programme? Try and choose a  
mixture of things to do that will help you, help others, help  
the environment, or just make the world a bit of a nicer  
place to be in. Now, let me see, I think I'll start off with a  
'smile more' day and then have a 'help a friend day', then  
maybe I'll have a 'Read that book I've been meaning to read  
day' and then.....

This year, why not let Lent be like a windy day, blowing the cobwebs away,  
ruffling up your everyday life, giving you an opportunity to fly a kite or to be  
energised. But please don't be like the Vicarage cats.....and slope off back  
indoors....As I keep telling the cats, 'There's more to life than snoozing.'

*Tony Edmonds*

# *St Michael and All Angels Parish Church*

## **Services & Locations for March 2011**

	<b>Time</b>	<b>Service</b>	<b>Location</b>
March 6 <sup>th</sup>	8.00am	BCP Holy Communion	Hathern & Kegworth
	9.00am	CW Holy Communion	Belton
	<b>10.30am</b>	<b>Family Service</b>	<b>Diseworth</b> , Hathern & Kegworth
		All Age Worship	Long Whatton
		CW Morning Prayer	Osgathorpe
	6.15pm	BCP Evensong	Kegworth & Belton
March 9 <sup>th</sup>	9.30am	BCP Holy Communion	Kegworth
Ash Wednesday	6.15pm	BCP Holy Communion	Long Whatton
March 13 <sup>th</sup>	8.00am	BCP Holy Communion	Belton & Kegworth
	9.00am	BCP Holy Communion	Osgathorpe
	<b>10.30am</b>	<b>CW Holy Communion</b>	<b>Diseworth</b> , Hathern, Kegworth & L.Whatton
	6.15pm	Benefice Service – Sacred Space	Belton
		BCP Evensong	Kegworth
March 20 <sup>th</sup>	8.00am	BCP Holy Communion	Kegworth
	<b>9.00am</b>	<b>CW Holy Communion</b>	<b>Diseworth</b>
	10.30am	CW Holy Communion	Belton & L. Whatton
		Family Service	Kegworth
	6.15pm	BCP Holy Communion	Hathern
		BCP Evensong	Kegworth & Belton
March 23 <sup>rd</sup>	7.30pm	Benefice Praise Evening	Hathern
March 27 <sup>th</sup>	<b>8.00am</b>	<b>BCP Holy Communion</b>	<b>Diseworth</b> & Kegworth
	9.00am	CW Holy Communion	Osgathorpe
	10.30am	CW Holy Communion	Hathern & Kegworth
	6.15pm	BCP Evensong	Belton, Hathern & Kegworth

**Morning Prayer held in Diseworth Church 8.30am-9.00am every Thursday**

### **Regular Weekday Services**

Tuesday	12.30pm	CW Holy Communion, Belton Church
Wednesday	9.30am	BCP Holy Communion, Kegworth Church



# *St Michael and All Angels Parish Church*

## Lessons and Readers for March 2011

	<b>Time</b>	<b>Reader</b>	<b>Sidesman</b>
March 6 <sup>th</sup> Sunday before Lent	<b>10.30am</b>		
	1 <sup>st</sup> Reading: Exodus 24.12-18		
	2 <sup>nd</sup> Reading: 2 Peter 1.16-21		
	Gospel: Matthew 17.1-9		
March 13 <sup>th</sup> Lent 1	<b>10.30am</b>		
	1 <sup>st</sup> Reading: Genesis 2.15-17; 3.1-7	A Stone	M Howe
	2 <sup>nd</sup> Reading: Romans 5.12-19	T Walker	
	Gospel: Matthew 4.1-11	R Harris	
March 20 <sup>th</sup> Lent 2	<b>9.00am</b>		
	1 <sup>st</sup> Reading: Genesis 12.1-4a	D Cherry	M Hening
	2 <sup>nd</sup> Reading: Romans 4.1-5,13-17	S Brompton	
	Gospel: John 3.1-17	S Bird	
March 27 <sup>th</sup> Lent 3	<b>8.00am</b>		
	1 <sup>st</sup> Reading: Exodus 17.1-7	M Hening	T Griffin
	2 <sup>nd</sup> Reading: Romans 5.1-11		
	Gospel: John 4.5-42	D Griffin	

*If you are unable to read on the date shown please arrange  
for someone else to do so.*

### Church Flowers and Brasses

	<b>Flowers</b>	<b>Brasses</b>
March 6 <sup>th</sup> /13 <sup>th</sup>	Mrs P Fletcher	Mrs S Briggs
March 20 <sup>th</sup> /27 <sup>th</sup>	Lent	Mrs M Linthwaite



# News from the Pews

## Other Benefice Services, Meetings and Social Events in March 2011

March 1 <sup>st</sup>	Tuesday	Kegworth House Group 8.00pm
March 2 <sup>nd</sup>	Wednesday	Hathern House Group 7.30pm
March 5 <sup>th</sup>	Saturday	Hathern Church Coffee Morning 10am-12noon
March 6 <sup>th</sup>	Sunday	Hathern Church Music Café, 6pm-8pm
<b>March 10<sup>th</sup></b>	<b>Thursday</b>	<b>Diseworth Annual Parochial Church Meeting 7.30pm in church</b>
March 12 <sup>th</sup>	Saturday	Kegworth Church Coffee Morning 10am-12noon
March 19 <sup>th</sup>	Saturday	Long Whatton Coffee Morning, Friendship Centre
March 23 <sup>rd</sup>	Wednesday	Benefice Praise Evening, Hathern Church, 7.30pm
<b>March 26<sup>th</sup></b>	<b>Saturday</b>	<b>Diseworth Church Spring Fayre 10am-12noon</b>
March 28 <sup>th</sup>	Monday	Benefice Bible Study, 33 Green Hill, Hathern 7.30pm

### Diseworth Annual Parochial Church Meeting

The annual meeting will be held in church at 7.30pm on Thursday, 10<sup>th</sup> March. Everyone is welcome to attend.

### Secretary to the Parochial Church Council

Rosemary Harris, who has held the post of PCC secretary for the past 8 years, is retiring at the annual meeting in March. The job is mainly taking minutes at the meetings and circulating them and agendas to all PCC members. If anyone is interested in volunteering for this post, please contact one of the churchwardens, David Bird or Muriel Howe, for further details.

*St Michael & All Angels, Diseworth*



## SPRING FAYRE

**Saturday, 26<sup>th</sup> March**

**10am – 12noon**

**Refreshments ~ Raffle ~ Books  
Bric-a-Brac**

# Leah Ross

1914 - 2011

From 1975 until 2007 Leah was a resident in Diseworth where she lived with her daughter and a retinue of pets including her beloved 'labs.' Leah touched the lives of so many people. She didn't offer advice or solutions but she would travel alongside people, friends and family and be quiet with them for an hour or so when they needed the still presence of a good friend.



She was so much a part of so many people's lives, an especially loved sister; the longest surviving of six; the best aunt one could ever wish to have and a treasured Granny to Gee, Annie and Sophie. She was a colleague at the Airport where she helped to run the shop and earlier still, a nurse who trained at the Derby Royal.

Leah travelled the world and settled in India where she married and lived happily until she was widowed. She returned to the UK and was always the one to 'be there' when help was needed. She remained busy; working until she was 75 and driving until she was 90. Always active and working despite her many bionic transplants!

She lived an independent and rich life until she was 92 when she accepted she needed more care. She remained free spirited and determined to the end and she will be sadly missed by all who knew her.

Jane Campbell-Ross

*Catholic Church of the Risen Lord.*

Hillside, Castle Donington

Mass every Sunday 9am



*Kegworth Methodist Church*

High St. Kegworth



**Sunday Services**

Morning Worship - 10.30am

Praise Worship – 6.15pm (First Sunday each month)

Minister – Rev. Diane Grice. Tel. No. 01509 672479



*Kegworth Baptist Church*

High St. Kegworth



**Sunday Services**

Morning Worship & Sunday School – 10.30am

Lead Deacon: Paul Phillips 01509-551464

[www.kegworthbaptist.org.uk](http://www.kegworthbaptist.org.uk)

R. Smith  
9 The Bowley  
Diseworth  
Derby  
Derbyshire  
DE74 2QL

17 January 2011

Dear Ruth

Thank you so much for your wonderful donation of £85.00 please pass on our sincere thanks to all those involved. Your continued support is very much appreciated.

Rainbows is the only children's hospice in the East Midlands caring for local children with life-limiting illness's, providing vital respite, palliative and end of life care for children as well as support for the entire family.

Every year we have to raise in excess of £3.8 million just to keep the doors of the hospice open and it's only thanks to people like you that Rainbows is able to continue to meet this very special need.

Once again on behalf of the children and families at Rainbows thank you for your kind support.

I would like to wish you a Happy New Year!

With kindest regards,



Paula North  
Community Fundraiser - Derbyshire  
Tel: 01509 638039  
Mob: 07880 721 750  
Email: Paula.North@Rainbows.co.uk



Crane Children's Trust (Registered in England and Wales)  
Registration Number: 2142251 Registered Charity Number: 1011202  
Registered Office: Lark Rise, Loughborough, Leicestershire LE11 2HG

Tel: 01509 638020  
Fax: 01509 216472  
www.rainbows.co.uk  
admin@rainbows.co.uk  
Lark Rise, Loughborough, Leicestershire LE11 2HG



## THE EGRET HAS LANDED

In early January, I was enjoying my morning walk around the home field, when I was startled by a crashing of wings. Instinctively I looked up, expecting to see a heron rise up and crash its way out of the brook. What I did see took my breath away. Not 20 metres away from me was a little egret taking off out of the brook and soaring away over the tree tops. I stood and watched it as it disappeared towards Clements Gate. I carried on my walk wondering if my eyes had deceived me. Could it really have been an egret?



*the egret posing for a photograph*

On returning home, I went on the web to check that I really had seen one, and sure enough photographs and descriptions confirmed that I had definitely seen an egret in our field. The RSPB website describes little egrets as small white herons, somewhat smaller than the grey

heron, with attractive plumes on crest, back and chest. They have black legs, bill and yellow feet.

They were first sighted in significant numbers on the south coast in 1989 and in 1996 on the Dorset coast, a pair successfully raised chicks, and now egrets do breed regularly on the south coast. Each year, they are moving northwards, and are quite common in East Anglia.

Numbers increase in the winter as birds arrive from the continent. Even so, I never expected to see one in our field.

The next day it was sitting by a thorn bush all hunched up, its white plumage quite startling against the grass. I fetched my camera and crept down towards it, clicking away as I went. It soon spotted me, flapped away and landed in a tall thorn bush by the brook. Again I crept towards it

willing it to stay where it was so I could try to get a good photo of it. I managed to get a couple before it flapped away again. Over the next 5 days it made regular appearances in the field, sometimes quite near to the farm, other times we saw it flapping about in the trees between our field and Clements Gate.

Being so white it stood out very clearly against the naked trees. The resident heron seemed quite interested in it, and one day the egret was sitting near the brook when the heron glided in and landed some 10 metres from it. Again I crept down the field as quietly and slowly as I could, hoping to capture them on camera, but no luck, off they both went, soaring over the treetops.



*the egret flying away from the camera*

Sadly that was the last time we saw the egret.

Why it went and where it went, I guess we shall never know, but we both feel privileged to have seen such a magnificent bird in our field.

---

## Diseworth Millennium Meadow



The Millennium Meadow is available for use by all inhabitants of Diseworth and Long Whatton at any time. It is the perfect place for a quiet stroll, especially in an evening or very early in the morning. There should be plenty of Spring bulbs and Primroses flowering by now.

All the trees are thriving and some are now quite an impressive size. We are still planting a few trees each year, mostly smaller or shrubby species to

provide infill and undergrowth. We also have a number of previously planted trees as yet without sponsors, so would welcome any enquiries.

If you plan to have a picnic there, please do. Just let us know in advance if a large gathering is planned. Dogs are welcome in the Meadow provided they are under control and not allowed to foul the site. The small gate is always unlocked. Please ensure it is secured when you leave.

*Contact: Pat Guy 811119*

# Home Composting

by Master Composter,  
Meg Galley-Taylor  
[meg@taylor.it](mailto:meg@taylor.it)



## March: Choosing and siting your bin

Once you have decided to start home composting you will need to think how and where you are going to do it. There are a variety of bins available but they are all just a container for the composting process, some more expensive and complicated than others. You don't actually need a bin at all. For years people have just built a heap in a corner somewhere and left it, and you can still do this, but covering it over with some old carpet or cardboard will help. However, with smaller gardens and more interest in them looking nice and providing outdoor living space, bins do look much neater and are easier to manage.

Once you have decided that you do need a bin your next decision is what sort, as they come in two basic types. The first deals with fresh, uncooked fruit and vegetables, peelings, green and brown garden waste and cardboard and paper. The second will take all of this but also takes cooked food waste including meat, cheese and fats.

The basic 'Dalek' type bin is the first type and is probably the easiest to start with and you can buy one, or preferably two, from a variety of suppliers, but the best way is to buy it through the Leicestershire County Council subsidised scheme which we are very fortunate to have. You can look on their website at [www.leics.gov.uk/waste](http://www.leics.gov.uk/waste) or call

01163057005 for details of these and other bins or I have some leaflets about how to get them. The basic black 'Darlek' bin is available at [www.getcomposting.com](http://www.getcomposting.com) or 08445714444 quoting LEL01L for just £7 (plus £5.00 delivery) and a second is only £3.50. There is also a modular square compost bin called the Komp 250 which costs £19.95 and this has the advantage of fitting neatly into a corner (Available from [www.greatgreensystems.com](http://www.greatgreensystems.com)). Alternatively you can build your own compost bins but again these will only be for the first type of composting (if you search on the internet you will find plans for doing this and many gardening magazines regularly include instructions).

If you decide that you also want to compost **cooked and uncooked** food waste as well as garden waste then the Green Johanna is for you. It is a food waste digester/composter and it comes complete with stirring stick,



instruction manual and fixing kit and is also available from [www.greatgreensystems.com](http://www.greatgreensystems.com) for £39.95 which is less than half the full price. You may also have heard of the Green Cone (£7.50 including professional installation) which is a food waste digester but I am not including this here as it doesn't take garden waste, doesn't produce compost and our heavy clay soil may not be suitable for it. Wormeries and Bokashi bins are also available if you are interested so if you want more details of these just ask

Whatever bin you choose, the ideal one is:

- Strong and sturdy to withstand the weight of the compost inside
- Not so heavy that it is difficult to move or so light that it blows over in the wind
- Reasonably gap-free at the sides to keep warmth and moisture in
- Provided with a well fitting lid or cover to make sure heavy rain doesn't cool the contents down and wash all the nutrients away.
- Easily accessible so that you can put green waste in and get compost out without difficulty. A reasonably large opening in the top is important to put material in and also allow you to stir the compost. There are bins with access hatches in the bottom but there are mixed views on their usefulness but they do let you look at the compost in the bottom to see when it's ready.

It should be:

- Conveniently close to the house so you won't be tempted to put the vegetable peelings in the waste bin rather than walk up the garden to the compost bin. Being near to the house also has the advantage of discouraging vermin as they don't like the disturbance. Giving the bin a good bang with a stick on a regular basis is supposed to be the best way of evicting any mice or rats.
- In a sunny or semi-shaded position (the Johanna needs to be in the shade) so that the bin can warm up in the sun to activate the composting process, but where it won't get too hot and dry in the summer
- Directly on the soil or grass so that the micro-organisms, worms and insects can easily find their way in. However, if you can only put your bin on concrete then they will find their way in but it might take a bit longer.
- In a well-drained area and away from water-courses so anything leaking out of the compost won't contaminate the water and can drain away

If you want any leaflets or information then please just ask. Next month I will be including tips about getting started with your compost.

# Family History for Beginners

at

## Diseworth Heritage Centre



On Wednesday 12<sup>th</sup> January students with a wide variety of ages, (*you are never too old to learn*) started the Family History for Beginners Course. The course runs for six weeks and costs £42. Our tutor, Cindy Wilson was assisted by Shirley Blythe. Eight adults signed in, with pencil, rubber, ruler, A4 plain paper, A4 notebook, A4 lever arch file or ring binder.

The first evening class started at 7pm and we were made welcome by Cindy and were introduced to each other. We were paired up to question each other on what we wished to get out of the course: What is family history; how to start a family tree; is there a family name you wish to research; are you a complete beginner or dabbler; what do you hope to achieve?

My name is Muriel Howe, *née* Fletcher, born in Diseworth and married in Diseworth. I'm interested in finding out about my side of the family, how the family came to live here and start their joinery, wheelwright and undertaker's businesses at The Woodyard in Hall Gate. I have been led to believe that they have been here for about 200 years.

Our tutor Cindy has been researching her family for 10 years. You begin with yourself: when and where you were born; who your parents are; do you have any siblings, partners, spouse, children; what documents about yourself do you have – birth, marriage certificates, passport, driving licence, newspaper cuttings, photographs etc.

It's now the end of week four and each week has proved to be very interesting. I must just say that some weeks you come up against a brick wall, which is very frustrating, and other weeks it all goes really well, like last night did for me.

As I said, I'm researching my father's name of Fletcher. My sister is Rosemary, my mother, Catherine Ann Burton Branson. My brother in law is Barry Smith and his father Leslie Smith.

This is what I've found out so far, working backwards –

Father – Joseph William, born 24.04.1903

Mother – Catherine Ann Burton Branson, born 25.07.1905

Married 02.06.1924

I have the details of their children and who they married.

Grandfather – Frederick Joseph, born 1881, died 21.10.1939

In 1902 he married Sarah Wright, born 1877, died 14.10.1959

I have the details of their children and who they married.

Great grandfather – William, born 1846

In 1866 he married Mary, born 1852

I have details of their children

In 1920, when the farms, houses and land, which belonged to Christ's College Cambridge were sold by auction, Frederick bid £590 for The Woodyard in Hall Gate. This is where they carried on the family business - joinery, wheelwright and undertakers. Our family bible has also proved a very good source of information.

When the weather improves I need to go and check out the grave stones at Giffydam, where a lot of the Fletchers descended from.

Maybe when the course is complete, we could display our family trees at the Heritage Centre with photos and certificates etc..

On behalf of all the students I'm sure it's true to say what a very interesting and exciting road we have been down.

*Muriel Howe (mature Student)*

# 100 YEARS of Family Farming at Village Farm

*The Dakins will be marking more than one hundred years of family life at the Farm.*



*Albert and Mary Marshall on their wedding day,  
March 21st 1911, at Village Farm Diseworth*

March 21<sup>st</sup> 1911 was a day of celebrations in Diseworth, Mary Orr Ferguson (29 yrs) of Village Farm married Albert Ernest Marshall (28yrs) of Hallfield Farm at St Michael and All Angels Church and later held their reception back at Village Farm. They went to live at Woodhouse Farm for 2 years, where daughter Mary (Ian's mother) was born. Soon after they took over the farm in Hallgate and Mrs Ferguson moved up the road to Chapel Farm.

25 years on, Mary Marshall married Frederick Dakin in 1938 with the reception again at Village Farm. Their married life started in Hathern.

*Frederick and Mary Dakin on their wedding day, 1938 at Village Farm*



*Albert and Mary Marshall at Ian and Sheila's wedding in 1968*

In 1967 the Marshalls retired late in life to live at 23 Hallgate, generously making way for grandson Ian to take over the farm. Ian and Sheila were married in 1968, almost 43 years ago

Over the last 2 weeks, looking back at old photographs of events and placing together the family tree, it has been both exciting and emotional, since re-discovering their formal wedding photo dated March 1911 in an old copy of The Nu-news whilst trying to lessen the contents of a cupboard!

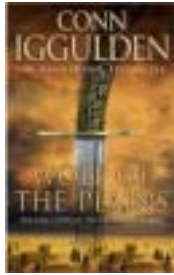
We plan to celebrate that weekend with Diseworth farming friends and family plus photos and the Wedding dress which Mary Orr Marshall wore.

*Sheila Dakin*

# Sue and Karen's Recommended Read

## Sue's choice: **Wolf of the Plains** by **Conn Iggulden**

An adventure epic, this is the beginning of a series about Genghis Kahn, whose life the author has described as “the ultimate rags to riches story”.



The book is set in savage times, where women are traded between tribes like goods, where violence and death are never far away and where the only difference between good and evil is honour.

It is easy to empathise with the characters in this narrative that have honour and savagery in equal amounts and it is a tribute to the author's skill and ability to shed light on a much maligned character in history.

*Wolf of the Plains* is a wonderfully told adventure tale, the kind that makes you feel as though you're sitting by a campfire, warming your hands as a storyteller's voice surrounds you. The emptiness and vastness of the scenery are breathtaking and a sense of wonderment prevails as each new chapter unfolds.

Not a story for the faint hearted, but I certainly found myself burning the midnight oil when reading this book.

The other books that follow are – ‘Lords of the Bow’ and ‘Bones of the Hills’

## Karen's choice: **Dissolution** by **C J Sansom**



This is the first of 5 books featuring the character Matthew Shardlake.

A fascinating brew of fiction and historical detail, set in 1537 in the

turbulent times of the revolutionary reformation after Henry VIIIth declared himself ‘supreme head of the church’. Thomas Cromwell sends a team to investigate the work of monks and monasteries, the sole intention being to dissolve them for money and to fit Henry's new regime. However, Cromwell's commissioner is murdered, a sacred relic is missing and it seems that dark, mysterious events are escalating at a Sussex monastery. Cromwell orders lawyer Matthew Shardlake to find the murderer and also the truth behind the sinister occurrences. Shardlake is a staunch reformer; he is also a hunchback, a condition which is met by derision and much superstition, which doesn't help his pursuit of the truth. Accompanied by his assistant, the investigation reveals surprising information and also causes Shardlake to question his own beliefs.

This book takes the reader right into the 1500's, with evocative sights and smells of the land and people and their conflict with savage new laws. Sansom blends a backdrop of historical facts about power, greed and subversion, with a very well told tale about his characters' lives and times.

# Goldie Locks

## and the *Three Musketeers*



The Members of Charnwood Community Theatre have surpassed themselves once again with their latest production: *Goldie Locks and the Three Musketeers*. Intrigued by the title and unsure what to expect, I knew that I was going to be entertained. I wasn't disappointed.

The show opened with a song and dance routine from the cast and neatly segued into the first of many 'Oh no he didn't ..... oh yes he did' scenes; the fun had begun.

The 'young' Bill & Goldie Locks are being cared for by Madam Battenberg, their spiteful guardian who is slowly but surely being relieved of her worldly goods by the three musketeers Barry, Harry and Gary. Add a creepy Cardinal, a housekeeper, two kittens called Tiddles & Babybel and just for good measure, a doddery waitress. Before you can say 'He's behind you' you have a pantomime.

Kym Godfrey was splendid as common sense housekeeper Connie. Armed with a feather duster, plenty of pregnant pauses and an abundance of innuendo, she had us in gales of laughter with her risqué references.

Sarah Cox was magnificent as domineering Madam Battenberg, resplendent in pink and yellow costume. With many witty lines of the cake variety and a hint of Sybil Fawcety, her presence on stage was imposing and her comic timing superb.

Tony Hilton was suitably solemn as Cardinal Cropper. He was on the receiving end of our hisses and boos but had us all cheering in act two when he shed his soutane to reveal a gold basque, tiny tu-tu and fuschia briefs; killer heels completed the ensemble as he strutted across the stage singing 'I feel like a woman.' Priceless!

The Three Musketeers: Barry, Harry and Gary were a joy to watch; these three stooges held the audience's affection as they added to their ill-gotten gains. John Hurley as Barry was compellingly camp in pink sequins and stetson. Mick Marlow was plausible as gauche and grumpy Harry although, to be fair, he had been a musketeer for 75 years. The third member of the group - 'gosh I'm gorgeous' - Gary was played with aplomb by Dan Lucas, a new member of C.C.T.

*Tony Hilton singing 'I feel like a woman'!*



Another newcomer to the theatre company is Melissa Bingham. Her starring role as Goldie Locks was performed with equal confidence and versatility as she sang, danced and held our attention throughout the production.

*The Three Musketeers. Barry, Harry and Gary*



Ady Bryan was, as always, totally and lovably immersed in his role as Bill Locks and we laughed with him and at him as he sought to become a musketeer. During his interview with the terrible trio he was asked what qualities he could bring to the position; his reply: “The speed of Linford Christie, the brains of Einstein and the body of Anne Widdecombe.”

Possibly the smallest part, but one which received the loudest laughter, was Sheila Sly as an elderly and absentminded waitress. The way she slowly shuffled back and forth across the stage as she repeatedly forgot the order was hilarious. This was ‘Mrs. Overall’ all over; a classic performance that deserved the lengthy applause.

Cameo roles played by Taylor Brown and her younger sister Casey were performed with commendable confidence.



*Kym Godfrey as Housekeeper Connie with Casey and Taylor Brown*



*Goldie Locks played by Melissa Bingham*

Cleverly written and directed by multi-talented duo Ady Bryan and Kym Godfrey, this production was worthy of a bigger audience. On one of the greyest, bleakest days of January, the atmosphere inside Diseworth Village Hall was warm and bright. This was strictly funny and they’ve certainly got talent. The individual members of this group may not be professional – they do it for fun - but their combined skills, versatility and enthusiasm deserve the acclaim of the professionals. ‘Oh yes they do!’

**Sue Brompton**

*The Charnwood Community Theatre always welcomes new members to join in the fun, in any capacity, whether experienced or not. For more details, visit their website:  
[www.freewebs.com/ctheatre/](http://www.freewebs.com/ctheatre/)*

# Diseworth Village Hall News



Good News! Our Village Hall website is now up and running at **[www.diseworthhall.org](http://www.diseworthhall.org)**. This site contains all you need to know about the Village Hall including news and forthcoming events. Although we are at the mercy of British Telecom who are installing our broadband connection, by the time this goes to print it is hoped that the Village Hall wireless internet access point will be active.

The Village Hall committee continues with its aim to bring different forms of entertainment & activities to the Diseworth community. The Calligraphy taster session took place in January; all who attended really enjoyed making a Valentine or birthday card. We were asked to do it again. Our thanks go to Peggy Tudor for running this session & providing all of the materials free of charge. The Zumba classes are proving to be a great success with at least 30 people attending each session.



*The calligraphy taster session at the village hall*

To celebrate St Patrick's Day, we are hosting an evening of music & dancing featuring the award winning Rabscallion, an Irish Ceilidh band on Saturday 19<sup>th</sup> March. Rabscallion are a six piece ceilidh (pronounced kaylee) band with two fiddle players, a whistle player, bass, percussion and guitar. They are


extremely talented musicians and promise to get the house bouncing with their up-beat contemporary interpretation of traditional Irish and Celtic music. We have also arranged a hog roast and a licensed bar. Tickets are selling fast so please either fill out a ticket request on the website or contact Mik Griffin (mik@griffin.it / 07787 505505) to reserve tickets. On a slightly calmer note, we have a watercolour painting workshop taster session at the hall on Saturday 26<sup>th</sup> March. Then, on Sunday evening, for all Real Ale lovers we have a Talk & Tasting session given by Sean O'Neill from the Wicked Hathern Brewery. For further details of these events please see our main advertisements or log on to the Village Hall website

We are holding a Beetle Drive on Friday 15<sup>th</sup> April this will be fun for the whole family. Please look out for future events in the Diseworth Diary and on the website. If you have any ideas for future events/activities at the hall, please let us know.

In April we are coming to the end of the 200 club year. We used to refer to this as the 135 club but due to the tireless efforts of Jane and Bill Cunningham, we have managed to increase the membership, which has in turn increased the amount of money that we have available to award in prizes. Therefore, we have two extra prizes in the April draw. These will be £40 and £35, bringing the total prizes for that month to six. We will be collecting next year's subscriptions in April and looking to also sell the remaining 25 numbers. If you are not a 200 club member yet, please contact Jane or look at the website for details of how to join.

<i>Diseworth Village Hall</i> <b>200 Club</b>			
March 2011			
Prize	Number	Name	Amount
1 <sup>st</sup>	33	D Blenkinsopp	£30
2 <sup>nd</sup>	196	J Aust	£20
3 <sup>rd</sup>	28	S Fletcher	£15
4 <sup>th</sup>	120	K Jepson	£10

Table Tennis  
now available to book  
hourly  
at the  
village hall  
no  
experience  
necessary  
contact Dave Adcock  
for details  
01332 850337



*Diseworth Village Hall*

# *Watercolour Painting*

## *Taster session*

*Learn how to paint an  
Early Morning Sunrise in Watercolours  
with Rita Sadler*



*All materials & equipment provided*

Saturday 26<sup>th</sup> March  
10:00am to 12 noon

£5 per person

*Maximum 15 places*

Please book your place on [www.diseworthhall.org](http://www.diseworthhall.org)  
Or call - Jane Cunningham 818758

# Diseworth Village Hall

in partnership with Incognosis Productions  
are proud to present...



## An evening of Irish Music and Dancing



Licensed  
Bar



## Saturday March 19th

Doors open 7:30pm

Rabscallion are a six piece Ceilidh band featuring two fiddle players, irish whistle, guitars and percussion and are guaranteed to get the house bouncing with their contemporary take on traditional Irish and Celtic music.

Come and jig the night away to celebrate St. Patricks day

---

**Tickets £15 per head (no charge for feet)**

**Inclusive of a Hog Roast from the Bowler Hatters**

Tickets available from [www.diseworthhall.org](http://www.diseworthhall.org)  
or directly from Mik Griffin, Jane Cunningham or Dave Adcock

# CIVIL WAR IN DISEWORTH

on Scarecrow Weekend 18<sup>th</sup>/19<sup>th</sup> June 2011



**King Charles I**



**Oliver Cromwell**

The annual two day event will this year feature a commemoration of the Civil War in Diseworth and the surrounding area in 1645. The event is sponsored by East Midlands Airport.

Members of the Sealed Knot organisation will be camping in the Village Hall Field. The Sealed Knot represents the 'New Model Armie' of Oliver Cromwell. In setting up their Living History camp they will offer training in musket and pike drill and explain the living conditions of the soldiers billeted in the area in 1645. Visitors who become involved will be invited to join in the two grand parades round the village and be 'signed up' up join the regiment.

Other activities planned include musket ball casting, authentic cookery of the time and situation, calligraphy with quills, dressing up and making siege coins. There will be exhibitions at the Church and Heritage Centre and also talks on the weapons and kit of the soldiers.

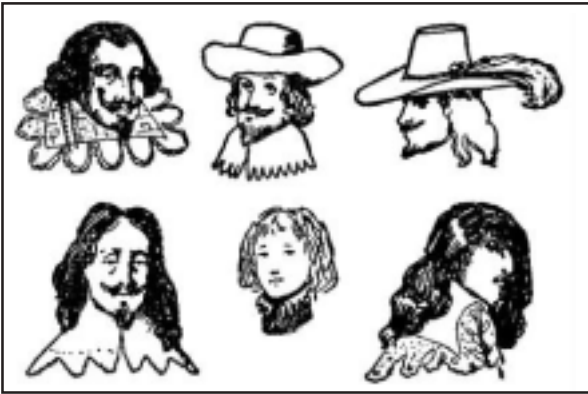
## **SCARECROWS.**

**All homes are invited to produce scarecrows to depict either a Royalist or Cavalier (for King Charles I) or a Parliamentarian or Roundhead (for Oliver Cromwell).**

**These will be judged and prizes offered.**

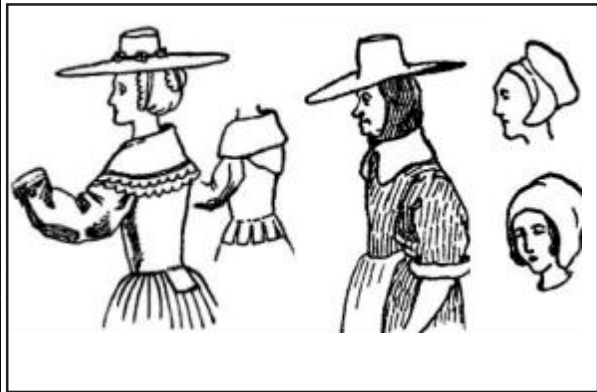
# What do they look like?

## Royalists



King Charles can be displayed with or without his head!

## Parliamentarians



The parades around the village will take place on both days, with muskets, pikes and drums and it is hoped that local people (preferably in costume) will join in. Safety demonstrations and drill displays will take place and the Living History camp in the Village Hall field will be open to visitors at set times. It is hoped to provide an artillery display on the Saturday evening.

There will be the usual lunches and teas available at the Church and other venues in the village and further details will appear in the *Dialogue* each month.

# Was Diseworth involved in the Civil War of 1645?



When a house in Ladygate was demolished many years ago a musket was found in the thatch of the roof and when a house in Hall Gate was being refurbished over twenty years ago a piece of plaster from a wall was found to have Civil War graffiti scratched on it depicting the soldiers from the Civil War. It is highly likely they were billeted there. The piece of plaster was kept first in the Church and then in Kegworth Museum. When the Heritage Centre was opened the plaster was returned to Diseworth. It has since been selected to be on the Leicestershire Revealed website of Leicestershire County Council.

*Nikki Hening*

*Part of the plaster showing a Civil War soldier*

## MOTHERING SUNDAY

At The Plough Inn,  
Diseworth  
Sunday 3<sup>rd</sup> April 2011

**Treat your Mum to a Traditional  
Sunday Lunch**  
Special 2 or 3 course menu available



**BOOK EARLY TO  
AVOID  
DISAPPOINTMENT**

## EASTER SUNDAY

At The Plough Inn,  
Diseworth  
Sunday 24<sup>th</sup> April 2011

**Enjoy a Traditional  
Sunday Lunch  
with the whole  
family.**

Special 2 or 3 course  
menu available



**BOOK EARLY TO AVOID DISAPPOINTMENT**



*Diseworth Village Hall*

***Wicked Hathern  
Brewery***

***Talk & Tasting session***

*Sean O'Neill will tell you about the Brewery and  
after you will be able to sample some of the  
bottled beers.*



Sunday 27<sup>th</sup> March  
19:30pm – 21:00pm

£3 per person

Please book your place on [www.diseworthhall.org](http://www.diseworthhall.org)  
Or call - Jane Cunningham 818758

\*there will be an opportunity to purchase bottles of beer  
to take home with you

# HEALTH PAGE

## *The Traditional Herbal Medicinal Products Directive*



Not a very exciting title is it, but it is an important piece of EU legislation that will be fully implemented on 30<sup>th</sup> April 2010. This all started in 2004 when it was announced in the EU that by the end of April this year, all herbal products would have to be licensed for use or be banned. So from 1<sup>st</sup> May only herbal medicines registered under the scheme will be available for use in Europe.

Approved herbal medicines will have had to show evidence of safety and efficiency through use over the last 30 years. All this sounds very sensible, but sadly some recent herbal products may be banned as they cannot meet the 30 year rule and it may be difficult to introduce new herbal products. Also because the licensing cost for each herb or plant product is very expensive, up to £120,000 per product, small producers of herbal products may go out of business as these costs are beyond their means. Larger chains and companies should have been able to have licensed more products, but as yet it seems difficult to find out exactly what the full extent of this directive will mean for anyone wishing to buy herbal medicines over the counter.

There have been concerns raised that even some herbal teas may be affected by this directive. As yet I have not found any evidence that vitamins and minerals will be affected for now, but that doesn't mean that they won't be affected in the future. None of these restrictions apply to herbal medicines and remedies that are made up individually for patients consulting a qualified herbalist, only to herbal products bought over the counter for self administration in the home. Traditional Chinese herbal medicine and the Indian practice of Ayurveda will be hit hard, as meeting the requirements of the scheme is impossible or too expensive for many of the products and herbs that they use.

Obviously it is important that herbal medicines are being regulated to ensure that they are safe and are proven to be helpful to the purchaser, but is this a case of throwing baby out with the bathwater? So if you are concerned that this ban may affect a product you are taking, talk to the supplier or shop, or go online where there is more information on what may or may not be affected after April 30<sup>th</sup>.

*Liz Jarrom*

# WINGS

## - YOUR VILLAGE NEEDS YOU!

### Potential Development South of The A453

When once questioned as to what shaped political life, Harold Macmillan famously replied ' Events, dear boy, events!'.

Well, after a period of time during which all has been quiet on the home front of Diseworth, 'events' are once again looming over the horizon; more specifically, our Northern horizon.

Much farming land around the village has found new ownership over the past eighteen months or so [nothing wrong with that, of course]. Most of us will have assumed that new title would not change the traditional use of this agricultural pasture, [nothing wrong with that either]

However, it would seem that new ownership, for some, has opened up an opportunity for commercial development. This proposed new development encompasses the large field running up the Eastern side of Grimes Gate between Hyams Lane and the Bleak House complex on the A453.

By the time you read this, the Parish Council Planning Committee will have been briefed on this possible development over several acres of countryside adjacent to the village. At present we have no further detail of the proposal, it's scale or the time frame

involved – we will report back when more is known, as no doubt will the Parish Council.

Over the years, we have been influential in opposing commercial development proposals South of the A453, [Arlington business park etc] Each new proposal comes with its own challenges. We don't yet know what spin will be put on this one.

Could this new proposal be a cynical effort to generate a commercial foothold south of the A453? Could it be the thin end of a very large commercial wedge right on the edge of the village?

Last month's *Dialogue* [page 37] advertised a public meeting to be hosted by Leicestershire County Council on **16<sup>th</sup> March**, 7pm at Spital Park Pavillion, The Spital, Castle Donington to discuss 'Leicestershire's green spaces'.

**Please attend this meeting if you can, we presently have a 'green space', let us keep it.**

If you are interested please contact **Jim Snee** by phone **01332 812345** or email [sneejim@live.co.uk](mailto:sneejim@live.co.uk) so that we can keep you appraised and we also have some idea of numbers.

WINGS meets every Tuesday in the Bull and Swan at 9pm.  
If you want to come along feel free - the more the merrier!

# DIALOGUE DISPATCHES



## Long Whatton and Diseworth Cub Pack

Starts on Monday 14<sup>th</sup> March 2011

Long Whatton Baptist Church

Main Street, Long Whatton

6.30pm -8pm

For Boys and Girls 8yrs - 10yrs

Contact: Jenny Laws 01509

842593

### Meeting Dates

Monday March 14<sup>th</sup>, 21<sup>st</sup>, 28<sup>th</sup>

April 4<sup>th</sup>, 11<sup>th</sup>, 18<sup>th</sup>



## Long Whatton and Diseworth Scout Troop

Meets on Fridays

Long Whatton Methodist Church

Main Street, Long Whatton

6.30pm -8.30pm

For Boys and Girls 10 - 14yrs

Contact: Jenny Laws 01509 842593

### Meeting Dates

Friday March 4<sup>th</sup>, 11<sup>th</sup>, 18<sup>th</sup>, 25<sup>th</sup>

April 1<sup>st</sup>, 8<sup>th</sup>, 15<sup>th</sup>

Reliable 14 year old, with

First Aid certificate,

available for

**babysitting** most evenings.

Please call Lucy Agar on

01332 850181 or 07763

952126.

## The Plough Inn

### GENERAL KNOWLEDGE Quiz Night

#### 3rd March, 6th April

1st WEDNESDAY of the month

Entry £1 each person, maximum of four in a team, first prize is half a gallon of beer, other prizes as well, including Sunday Lunch for two. Entry to the quiz includes a snack at half time.



The Mobile Library visits

Diseworth on the

4th and 18th March

The Bowley 11.55 - 12.15

Clements Gate 12.20 - 1.20

The contact number for the

mobile library is

0116 3053565

If you have items for the  
APRIL ISSUE of the *Dialogue* please  
give to a committee member or  
email to [peggy.tudor@btinternet.com](mailto:peggy.tudor@btinternet.com)  
[sue@cbrompton.fsnet.co.uk](mailto:sue@cbrompton.fsnet.co.uk) and  
[ruth@airnig.co.uk](mailto:ruth@airnig.co.uk)

There is **NO CHARGE** to put items  
into the magazine -  
(except the yellow pages).

Please share with us your stories  
and announcements.

**PLEASE MEET THE DEADLINE  
of the 7<sup>th</sup> March.**

*Buy your supplies of Coal, Kindling and  
Logs from Long Whatton Post Office.*

# DI A L O G U E   D I S P A T C H E S

We welcome a new advert from  
Cathy Coupe -  
Approved Driving  
Instructor  
Castle Donington  
01332 812564/  
07841 611703

**The Auto Service  
Centre at East  
Midlands Airport, car  
servicing, tyres, repairs  
and much much more.  
Call 01332 810522.**

**Mother's Day Baskets**  
Castle Donington and District  
Flower Club invite you to Diseworth  
Village Hall for a

**FREE Flower Arranging Class**

on Saturday 2<sup>nd</sup> April  
10.30am – 11.30am to make your  
own Mother's Day basket of flowers.

All materials provided .. it's fun and free ..  
just bring your scissors.

Any age and sex welcome. To help us to estimate the  
flowers required and to book a place please phone  
01332 810182.



## Women's Afternoon Discussion Group

**March 7<sup>th</sup> What price longevity?**

7a Ladygate by kind invitation  
of Marianne Dokhanian

**April 4<sup>th</sup> Are the baby boomers the blessed  
generation?**

9 The Woodcroft by kind invitation  
of Trisha Thomas

**May 2<sup>nd</sup> The Royal Wedding**

20 Clements Gate by kind invitation  
of Carly Snee

*Extra copies of the Diseworth  
Dialogue will be on sale in both The  
Plough and  
The Bull & Swan and also in Long  
Whatton Post Office*

## Flower Workshops in Diseworth Village Hall

2-4pm

Start March 5<sup>th</sup>

March 26<sup>th</sup>

April 2<sup>nd</sup>

April 16<sup>th</sup>

May 14<sup>th</sup>

May 28<sup>th</sup>

June 11<sup>th</sup>

June 18<sup>th</sup>

£5 a class

Contact Iris Tebutt

on 01332 810182 for more details or  
to book a place.



**Table Tennis**  
now available to book hourly  
at the village hall

no experience necessary

contact Dave Adcock

for details

01332 850337



Welcome to the yellow Pages

**“WOW!” Catering**

**Buffets & Hospitality**

20 Hallgate, Diseworth

Exclusive buffets & catering for  
private and trade

# News from the Beat



January crime figures for Diseworth:

x1 Damage to motor vehicle

x1 Damage

## New national crime mapping website launched.

Leicestershire Constabulary has joined all other Forces across England and Wales by publishing new street-level crime, anti-social behaviour (ASB) and local policing information via a new website

[www.police.uk](http://www.police.uk)

The new site allows the public of Leicester, Leicestershire and Rutland to check on the crime and anti-social behaviour that has happened in their area in recent weeks by simply entering their postcode.

Members who do not have access to the internet can contact their local beat teams, who should be able to provide you with the information you require. You can contact your local beat team members PC 1760 Jason Underwood and PCSO 6178 Nicola Stanhope by ringing 0116 222 2222.

Enter your postcode, town, village or street into the search box and get instant access to street-level crime maps and data, as well as details of your local policing team and beat meetings.

This transparent new level of crime and local policing information will help people to find out what's happening and will enable them to hold their local police and partners to account for the action being taken and how issues are being tackled.

Lastly Kegworth Police station relocated to the Yew Lodge Hotel, Kegworth on the 26/01/2011. Unfortunately you can not visit or contact your local beat team at the hotel. If you require police assistance please call 0116 222 2222, alternatively if you wish to contact your local beat team you can leave them a voicemail by selecting option 2 and entering their collar number.

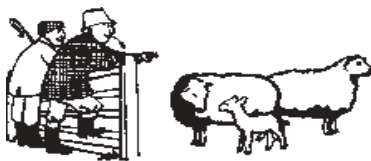
*PCSO 6178 Nicola Stanhope*

## Beat Surgeries 2011

Come along and express your views and concerns to your local beat team at any of the above locations on the dates and times shown.

<b>Date</b>	<b>Time</b>	<b>Location</b>	<b>Location</b>
Thurs 3 <sup>rd</sup> March	18:00-20:00	Osgathorpe	Storey Arms car park
Wed 6 <sup>th</sup> April	10:00-12:00	Diseworth	Near Village Hall

# LONG WHATTON & DISEWORTH PARISH COUNCIL NEWS



PC Jason Underwood attended the meeting and gave a report about recent crime in the Parish. He also explained that there was not now a police facility open to the public in Kegworth. The nearest were at Loughborough and Coalville. Contact by phone and email were unaffected and he urged people to call to see him at the police surgeries which he held in the Parish (details on notice boards and police and Parish websites).

The traffic calming scheme (currently partially complete) in Long Whatton had been welcomed generally, although there were some individual concerns ranging from “drivers still go fast so it’s a waste of time”, to “it’s very good - we want more humps”. The Council decided to await the completion of this work in progress.

It was reported that the efforts made to help revive *Long Whatton News* to secure its future appeared to be bearing fruit, with new volunteers coming forward. The advice offered by some of the *Diseworth Dialogue* team had been much appreciated.

The Allotments project was proceeding well and it was hoped that the land would become available imminently. Everything was in place to make a start on preparing the ground, installing gates and marking out the plots.

Representatives would attend the forthcoming meeting of a re-vamped Donington Park Liaison Committee.

The Council has been consulted on a proposal to impose waiting restrictions on the main

roads around the Airport and Donington Park. As these would replace the existing Clearway, extend the regulation to include the verges and reduce the need for signs, the Council expressed its satisfaction with the proposals. However, there remains the always-present concern about parking being displaced to village roads and although this proposal does not materially change the present position, this concern would be referred to in the Council’s response.

Various concerns had been expressed recently about littering in the villages and these are being taken up with the District Council.

The forthcoming Election for Parish Councillors was discussed. The various actions being taken to publicise the Elections and the need for anyone wishing to stand for election to begin considering what they need to do as soon as possible were noted. Full details can be found at the Council’s website: [longwhattondiseworth.org.uk](http://longwhattondiseworth.org.uk).

Douglas Maas, Parish Clerk  
Telephone: 01530 242534

email: [longwhatdisepc@hotmail.com](mailto:longwhatdisepc@hotmail.com)  
[www.longwhattondiseworth.org.uk](http://www.longwhattondiseworth.org.uk).

## **PARISH COUNCIL MEETINGS**

Thursday 3rd March 2011 7.30pm at  
Long Whatton Community Centre,  
The Green

Thursday 7th April 2011  
Annual Parish Meeting, Parish Council  
Meeting, 7.15pm  
at Diseworth Village Hall, Hall Gate

# 1<sup>st</sup> Diseworth Guides



It has been too long since we last informed you about our Guiding activities. Adele and Margaret have been very busy leading the meetings whilst I've been on maternity leave so I thought I would let you know what we've been up to recently. This is now only possible as I've managed to attend some recent Guide meetings myself ... without my children!

The end of the year long centenary celebrations were marked by Diseworth Guides attending a sleep over in the grounds of Alton Towers and a fun filled time at the hotel there and at the theme park. It was a tiring weekend but hopefully a momentous one. The centenary year closed at 20.10 on 20<sup>th</sup> October for our Division in Loughborough's Queens Park. There was a huge photograph display projected onto the wall of the Carillon which included photos of our unit's activities.

November and December were spent doing crafts for Christmas, cooking and Go for It's. We welcomed 3 new members from Kegworth to our unit as well. Many of us went to see Cinderella at Loughborough's Town Hall. A great time was had although we were a little bemused when an ugly sister announced us as being Brownies!

2011 has started off with all sorts of different activities including new games and challenges. We've been reading through a play which we hope we'll perform at the village hall later this year. For Chinese New Year we utilised our monthly village hall meeting to cook up a huge feast of all sorts of Chinese dishes. The fried rice and Issy's now famous spare ribs were firm favourites.

We hope to go on a small unit camp this summer and some Guides may take part in the International camp at Whatton Hall in August. We welcome more Brownies from Kegworth to become Guides as they turn 10 this term. As a result of having many younger Guides, and Brownies being suspended, **we are changing our meeting time to 6.30pm - 8.00pm at Diseworth School.**

It is very unfortunate for Guides that Brownies has been suspended at present. Not only will we miss everyone and our joint activities but of course it might mean that Guides will consequently lack in numbers too.

Personally I am also saddened by this as I've almost never left Guiding in the village. I was a Diseworth Brownie myself 30 years ago & became a pack leader when I was a Guide, a Young Leader at the age of 14 then an adult Diseworth Brownie Leader aged 18. After 6 years or so as "Tawny Owl" I then



went on to set up the current Guide unit so that Diseworth girls could still be part of the world's largest organisation for women in OUR VILLAGE.

It's so important to keep Diseworth alive with such activities and Brownies has been running in here for almost 40 years. We CAN re build the unit with support from local families who have girls aged between 7 and 10. Please contact us if you know **any one** who might be interested in Brownies or Guides. Any girl can become a Guide aged between 10 and 15 even if they've not been a Brownie.

Yours in Diseworth Guiding

*Sandie Clark*

Contact numbers can be found on the back page of your *Dialogue*

---

## Help us to Keep Brownies Open ... girls ages 7 - 10 wanted

Diseworth Brownies has been around for several years now and has always been a long lasting, fun evening for girls aged 7-10. We saw the departure of the youth club and the playgroup within the village and now due to lack of members we may have to close Brownies.

Diseworth doesn't have a lot for young children to do after school anymore and it would be such a shame for us to have to close.

We are in need of keen girls aged 7-10 to come and join us on a Monday evening! If we can get at least 8 girls interested we can keep Brownies open.

Please contact my self on 07912546681 for more details.

Many thanks  
*Charlotte Pass*



**Volunteer Centre**  
Castle Donington & District

# COMMUNITY BUS

## Dial-a-Ride Shopping

Door to Door Service and help with carrying shopping to your house

Mondays: sheltered housing groups in Castle Donington to Coalville, £3 return

Tuesdays: Castle Donington, Long Whatton to Morrisons, Coalville, £3 return

Wednesdays: Castle Donington, Diseworth, Hemington and Lockington to ASDA and Tesco Superstores at Long Eaton, £3 return

Thursdays: Castle Donington, Hemington and Lockington to shops and Post Office in Castle Donington, Trent Lane Co-Op, £2 return

Fridays: Castle Donington, Tonge, Breedon to Morrisons Coalville £3 return

We can expand the routes if you want to go to a particular store

for more details, or to reserve a seat, contact  
CASTLE DONINGTON COMMUNITY BUS OFFICE  
Castle Donington & District Volunteer Centre, 25a Borough Street,  
Castle Donington, DERBY DE74 2LA

e-mail: [commbus@cdvb.org.uk](mailto:commbus@cdvb.org.uk)

or telephone 01332 850742

# DISEWORTH WOMENS GROUP

ONE YEAR ON – Are we

**Going to**

**Move forward?**

Would you like to come along and discuss its future and bring fresh new ideas to what was a very sociable group? Did you miss it last year? Are you ready to build a new group?

Monday 14<sup>th</sup> March  
The Village Hall  
8pm

Followed by free refreshments

Any enquiries - Sheila Dakin, 810858 or Liz Jarrom, 810358

## **Jon Boden**

**in concert**

Lead singer from Bellowhead and BBC Folk Singer of the Year 2010  
in a rare solo performance

**Thursday 5th May**

**7.30pm**

**Long Whatton Community Centre**

Tickets £7.00

available from Manor Farm Shop or Long Whatton Post Office

Box Office: 01509 646413 or 01509 844347

# Digital Switchover

## Volunteers Sought!



TV is going digital. The existing analogue TV signal will be switched off and replaced with a new, stronger digital TV signal. It will mean that almost everyone will be able to receive digital TV through an aerial but people will need to retune their set at the appropriate times and some people may need a set top box.

There will be a number of roadshow events and advice points around the area to inform people what is going to happen and a help scheme is available for people who may experience difficulties.

It is anticipated that around 5% of people may experience difficulties and may not know where to go for the help that is available.

### ***Volunteering for the RCC -***

Volunteers are sought to help people access the information and support.

The RCC (Leics & Rutland) will be seeking up to **45 volunteers** from across Leicester, Leicestershire and Rutland who will be a local contact point and able to help vulnerable people, who have slipped through the net to access the help scheme or seek appropriate advice. Training will be provided and **expenses up to £350** will be available for these community volunteers.

Their task will be to

- Attend a training workshop and a mid project evaluation
- Identify additional community supporters in their area
- Identify and support those in the target group
- Collect data from the community supporters and report back to the project officer

The project will be undertaken between March 2011 and September 2011 and most work will be undertaken in your own local area.

If you feel that you would like to volunteer please contact Diana Cook for more details and an application form [dcook@ruralcc.org.uk](mailto:dcook@ruralcc.org.uk) 0116 2689706 or see our website <http://www.ruralcc.org.uk/latestnews.html>



March 2011 News from

# DISEWIRED

## The Community Group for Better Broadband in Diseworth

---

Last month we reported that there had been a delay to the funding process, upon which we are reliant for getting fibre optic broadband into Diseworth. Unfortunately this delay has now been confirmed via a letter we have received from the East Midlands Development Agency. Basically, the funding process has fallen foul of complex European regulations regarding State Aid. This does not mean that funding will not be available according to the figures we have anticipated, but it does mean that the whole process will be delayed until “at least Autumn 2011”. We remain confident that our case is robust and that when funding becomes available we are “good to go”. All of our prospective partners remain fully committed to the Disewired project and are as anxious as we all are to get fast, reliable and affordable Internet services delivered to Diseworth.

As soon as we have further news, we will post it on **[www.disewired.com](http://www.disewired.com)**. In the meantime, we need to keep gathering information, including monitoring data on broadband speeds in the village. If you are on broadband, we encourage you to visit **[www.blimpchecker.co.uk](http://www.blimpchecker.co.uk)** and follow the steps to register. This will allow anonymous profiling of the service in the village, and also allows you to check the speed of your Internet Service Provider compared to other ISP’s in the village. You may find it quite enlightening! As always, more news as it breaks on **[www.disewired.com](http://www.disewired.com)**.

Mike Doyle & Mik Griffin

*on behalf of The Disewired Team*

**[www.disewired.com](http://www.disewired.com)**

email: **[info@disewired.com](mailto:info@disewired.com)**

facebook group: search “disewired”



# “Recycle Bin”

Have you got things, in the loft, the cupboard, the spare room, the shed, that you no longer need?

You don't want to sell it on ebay and it's too good to take to the tip. The idea is that if you don't want it, someone else can make use of it.

Why not advertise it in 'Recycle Bin'?

If anyone has more seeds or seedlings than they need in their own garden - why not advertise them in the 'Recycle Bin'?

**Kitchen Ceramic Wall Tiles**  
Bought from Tile Town - Derby  
Gaudie Range  
10cm x 10cm  
56 - Gaudie Oak  
6 - Gaudie Cotton  
65 - Gaudie White (Cream)  
Jane Cunningham  
Tel. 01332 818758

successfully recycled

**Diseworth School Sweatshirts**  
I have a selection of Diseworth School Sweatshirts in various sizes requiring a new home.  
Tel. 01509 842556  
Adele Jarrom

It is **free** to advertise and you give your unwanted items away for **free**. Send a short description (max 50 words) of the item to the *Dialogue* and a contact telephone number or email address.

## Directory of Useful Numbers

BBC East Midlands	0115 9021930	<a href="mailto:emt@bbc.co.uk">emt@bbc.co.uk</a> <a href="http://www.bbc.co.uk/england/eastmidlandstoday/">www.bbc.co.uk/england/eastmidlandstoday/</a>
BBC Radio Derby	01332 361111	
British Gas - Engineer	0800 111011	<a href="http://www.britishgas.co.uk">www.britishgas.co.uk</a>
Emergency	0800 111999	
Castle Donington Community College	01332 810528	<a href="http://www.castledonington.leics.sch.uk">www.castledonington.leics.sch.uk</a> <a href="mailto:postroom@castledonington.leics.sch.uk">postroom@castledonington.leics.sch.uk</a> <a href="mailto:mail@cdvb.org.uk">mail@cdvb.org.uk</a>
Castle Donington Volunteer Bureau	01332 850526	
Chemist, Gerald Porter, Castle Donington	01332 810213	
Derby Playhouse	01332 363275	<a href="http://www.derbyplayhouse.co.uk">www.derbyplayhouse.co.uk</a>
Diseworth C of E Primary School	01332 810208	<a href="http://www.diseworthprimary.co.uk">www.diseworthprimary.co.uk</a>
Doctor's Surgery –		
Health Centre, Castle Donington	0844 477 3092	
Orchard Surgery, Kegworth	01509 674919	
Manor House Surgery, Belton	01530 222368	
East Midlands Airport	0871 919 9000	<a href="http://www.eastmidlandsairport.com">www.eastmidlandsairport.com</a>
East Midlands Electricity emergencies	0800 056 8090	
Environment Agency	08708 506 506	<a href="http://www.environment-agency.gov.uk">www.environment-agency.gov.uk</a>
Incident hotline	0800 807 060	
Kinchbus	01509 815637	<a href="http://www.kinchbus.co.uk">www.kinchbus.co.uk</a>
London Road Community Hospital, Derby	01332 265500	<a href="http://www.derbyhospitals.nhs.uk">www.derbyhospitals.nhs.uk</a>
Loughborough Hospital	01509 611600	
Mobile Library	0116 3053565	
NHS Walk In Centre, Pinfold Gate, Loughborough, LE11 1BE	01509 553998	
NHS Direct	08 45 46 47	<a href="http://www.nhsdirect.nhs.uk">www.nhsdirect.nhs.uk</a>
North West Leicester District Council	01530 45454	<a href="http://www.nwleics.gov.uk">www.nwleics.gov.uk</a>
Nottingham Concert Hall	0115 989 5555	
Nottingham Playhouse	0115 941 9419	<a href="http://www.nottinghamplayhouse.co.uk">www.nottinghamplayhouse.co.uk</a>
Nottingham Royal Centre and Concert Hall	0115 989 5555	<a href="http://www.royalcentre-nottingham.co.uk">www.royalcentre-nottingham.co.uk</a>
Police	0116 222 2222	
Post Office - Long Whatton	01509 842264	
Post Office - Castle Donington	01332 810515.	
Queens Medical Centre, Nottingham	0115 924 9924	<a href="http://www.nuh.nhs.uk">www.nuh.nhs.uk</a>
Capital FM East Midlands (formally radio Trent)	Nottingham/Leics/Derby	
Station	0115 8731500	<a href="http://www.capitalfm.com.eastmids">www.capitalfm.com.eastmids</a>
News Room	0115 8731520	
Reel Cinema Loughborough	01509 235235	
Royal Derby Hospital	01332 340131	<a href="http://www.derbyhospitals.nhs.uk">www.derbyhospitals.nhs.uk</a>
accident and emergency	01332 783111	
Royal Derby Children's Hospital	01332 786899	
accident and emergency	01332 783277	
Severn Trent Customer Service	08007 834444	
Skylink	0115 9506070	<a href="http://www.skylink.co.uk">www.skylink.co.uk</a>
Traveline - for all public transport information	0871 200 22 33	<a href="http://www.traveline.org.uk">www.traveline.org.uk</a>

**If you have any suggestions for useful numbers to be included in this directory,  
please let any committee member know.**

The Neighbourhood Watch beat officer for Diseworth is Jason Underwood No. 1760.  
He can be contacted on 0116 248 5675 and then entering his number 1760.

# Village Directory

Organisation	Contact Person	Telephone No
Book Worms	Sandie Moores	01332 812629
Brownies	Charlotte Pass	07912 546681
Diseworth Village Hall	Dave Adcock	01332 850337
Flower Show	Village Hall Committee	01332 811119
Friends of Diseworth School	Meryl Tait	01332 812952
Guides	Sandie Clark	01332 814939
Heritage Centre	Martin Hening	01332 853647
History Society	Pat Guy	01332 811119
Millennium Meadow	Pat Guy	01332 811119
Neighbourhood Watch	Noel McGough	01332 811362
Scouts & Cubs	Jenny Laws	01509 842593
Soar Valley Twinning Assoc.	Sheila Hawksworth	01509 568793
W.I.N.G.S.	Erica & Andy Foxall	01332 811689
Women's Discussion Group	Liz Jarrom	01332 810358
Women's Group	Sheila Dakin	01332 810858

## Diseworth Village Hall [www.diseworthhall.org](http://www.diseworthhall.org).

If you would like to book the village hall please contact Dave Adcock.  
He will make arrangements for the provision of keys at the appropriate time.  
9 Page Lane, Diseworth. 01332 850337

## NEIGHBOURHOOD WATCH CONTACTS

### CO-ORDINATORS:

Noel McGough, 28 Lady Gate. 811362

Barry Smith, 18 Hall Gate. 812600

Sandie Moores, contact person for Lady Gate. 812629

Victoria Britton contact person for Clements Gate. 850184

## YOUR LOCAL PARISH COUNCIL

The role of your Parish Council includes safeguarding the amenities of the village, including highways, lighting, drainage, road signs and planning matters. Current planning matters are available for inspection by arrangement with the **Parish Clerk:**

**Douglas Maas, 86 Forest Road, Markfield LE67 9UN. Tel: 01530 242534.**

**Email: [longwhatdisepc@hotmail.com](mailto:longwhatdisepc@hotmail.com).**

Please visit the website at [www.longwhattondiseworth.org.uk](http://www.longwhattondiseworth.org.uk)

If you wish to discuss any matters of concern, please contact your Parish Councillors:

David Bamford,	43 The Woodcroft, Diseworth DE74 2QT	07802 817691
Sue Roberts,	Chapel Farm, Hall Gate, Diseworth DE74 2QJ	01332 810813
Derek Wiggins,	6 Clements Gate, Diseworth DE74 2QE	01332 810209
Andrew Cawdell,	58 The Green, Long Whatton LE12 5DB	01509 843273
Linda Downs,	12 Barnfield Close, Long Whatton, LE12 5BZ	01509 842117
Michael Downs,	12 Barnfield Close, Long Whatton LE12 5BZ	01509 842117
Thomas Wilkins,	1 Hathern Road, Long Whatton LE12 5DD	07521 461326

Parish Council meetings are held at 7.30pm on the first Thursday of each month, alternately at Diseworth and Long Whatton. Please see the Notice Boards or ask the Parish Clerk for current information or to make general enquiries about the Parish Council.