

# The Diseworth Dialogue



APRIL 2011

*16th BIRTHDAY ISSUE*

No 164

Delivered free to households  
in Diseworth

<http://www.diseworth.org/dialogue.htm>

£1

# The Diseworth Dialogue

## COMMITTEE

<b>Chairman</b>	Nicky Miller	814663
<b>Vice Chair</b>	Liz Jarrom	810358
<b>Editor</b>	Peggy Tudor	810780
<b>Assistant Editor</b>	Sue Brompton	850592
<b>Treasurer</b>	Christine Agar	850181
<b>Advertising</b>	Victoria Britton	
<b>Production</b>	Ruth Smith	811538
<b>Minutes Secretary</b>		
<b>Founding Editor</b>	Carly Snee	

## Committee Members

Sue Bird, Gill Burrage,  
Jane Cunningham, Janet Fletcher,  
Linda Gaymer, Nikki Hening, Jim Sneec,  
Julie Werb

## Delivery Team

**Leader** Linda Gaymer 812246

Sue Bird, Norma Chapman,  
Nancy Cowley, Julie Doyle, Rosalyn  
Edwards, Jan Firth, Sue Hill, Sandie  
Moores, Pauline Needham, Sam Pass,  
Rosie Smith, Julie Werb

**Line Drawings** by Steven Allison

*Details of our committee meetings can be found in the diary section of the magazine.  
We extend an open invitation to members of the village to come to our meetings.*

## CONTRIBUTIONS

Please let us have your items for publication (this includes advertising) by the 7th of the month for the following month's issue.

Remember that we produce 2 double issues (July/August and December/January).

**All contributions will be considered for publication.** They can be delivered to any committee member or emailed to [peggy.tudor@btinternet.com](mailto:peggy.tudor@btinternet.com) [ruth@airnig.co.uk](mailto:ruth@airnig.co.uk) and [sue@cbrompton.fsnet.co.uk](mailto:sue@cbrompton.fsnet.co.uk) or via our village web site at [www.diseworth.org](http://www.diseworth.org) and [www.leicestershirevillages.com/diseworth/](http://www.leicestershirevillages.com/diseworth/)

Contributions for our dispatches page are most welcome. Share your news with the village - birthdays, weddings, anniversaries, congratulations etc. When contributing, please **include your name**. We do need your name, but we won't publish it if that's your wish. If you're a child, our readers appreciate seeing your age too!

**Designed & produced by**  
Ruth Smith, [ruth@airnig.co.uk](mailto:ruth@airnig.co.uk)  
01332 811538

**Printed by** Ashfield Screen Printing Ltd.  
[www.ashfieldsp.co.uk](http://www.ashfieldsp.co.uk)

## ADVERTISING

Advertisements in our Yellow Pages can be placed yearly or monthly according to your needs. Please contact **Victoria Britton** by email at [victoria@pennline.co.uk](mailto:victoria@pennline.co.uk) or **01332 850184** for details.

## DISCLAIMER

Any views or opinions expressed within the pages of the *Diseworth Dialogue* are not necessarily those of the Editorial Team or Committee. All advertisements are accepted in good faith.

## OUR PRICING POLICY

We aim to be able to deliver one copy of the *Diseworth Dialogue* to each household in Diseworth. Our objective is to fund production through advertising, fund raising and voluntary contributions. We aim to deliver a quality publication which enriches village life and encourages such voluntary contributions, these we invite annually. Additional copies are available for purchase at £1. If you know somebody living outside the village who would like to have a copy mailed on a subscription basis, please let us know. Mail subscription is £10 per year, including postage.

# Contents



## Regulars

Beat News	36
Book Review	20
Church News	6/10,12
Country Matters	14/15
Diseworth Diary	4
Dispatches	36/37
Editor's Letter	5
Health Page	40
Millennium Meadow	15
Parish Council	38/39
Recycle Bin	46
Village Hall News	22
Wings	30/31

## Features

<b>TOP 10 APRIL FOOLS</b>	42/43
Cartoon - Dan Snee	27
Civil War in Diseworth	28/29
Cyril the Fox	26
Diseworth on Facebook	44
Diseworth Heritage Trail	18/19
Diseworth Village Show	23
First Stage Drama	21
Home Composting	16/17
ITV comes to Diseworth	32
Long Whatton Cricket Club News	45
Manor Farm Oscar Win	11
Mantle Arts	41
Obituary - Arthur Fletcher	13
Sudoku	27

## Notices & Ads

An Evening of Jazz	35	Heritage Centre Opening Times	29
Arts and Crafts Club	33	Heritage Centre Volunteers	29
Ballroom Dancing	34	May Market	39
Beat Surgery	37	Plough Inn News	46
Beetle Drive	34	Retired Residents Lunch	35
Good Friday Activities	10	Table Tennis	23
Farmers' Market	4	Tea and Cakes	33
First Stage Drama Classes	21	Village Show Schedule	24/25
Flower Workshops	37		

# DISEWORTH DIARY

## APRIL

Saturday	2 <sup>nd</sup>	Free Flower Arranging Class Village Hall 10.30 – 11.30am
Monday	4 <sup>th</sup>	Discussion Group: ‘Are the Baby Boomers a Blessed Generation?’ 9 The Woodcroft, 2pm
Tuesday	5 <sup>th</sup>	Zumba at the Village Hall 8.15 – 9.15pm
Wednesday	6 <sup>th</sup>	Beat Surgery adjacent to the Village Hall 10am to 12 noon
Thursday	7 <sup>th</sup>	Coffee, Cakes & Computers at the Heritage Centre 10am – 12 noon
Thursday	7 <sup>th</sup>	Parish Council Annual Meeting Diseworth Village Hall 7.15pm
Tuesday	12 <sup>th</sup>	Zumba at the Village Hall 8.15 – 9.15pm
Friday	15 <sup>th</sup>	Beatle Drive at the Village Hall 6pm – 8pm
Saturday	16 <sup>th</sup>	Flower Arranging Workshop Village Hall 2 – 4pm
Sunday	17 <sup>th</sup>	Ballroom & Latin Dancing Lesson Taster Session, Village Hall 7 – 9pm
Tuesday	19 <sup>th</sup>	Zumba at the Village Hall 8.15 – 9.15pm
Thursday	21 <sup>st</sup>	Coffee Cakes & Computers at the Village Hall 10am – 12 noon
Friday	22 <sup>nd</sup>	Children’s Good Friday Activity Morning at church. 10.30 - 12 noon
Saturday	23 <sup>rd</sup>	Service of Praise for Easter, Heritage Centre 6pm

## MAY


Monday	2 <sup>nd</sup>	Discussion Group ‘The Royal Wedding’ 20 Clements Gate 2pm
Tuesday	3 <sup>rd</sup>	Zumba at the Village Hall 8.15 – 9.15pm
Thursday	5 <sup>th</sup>	Coffee, Cakes & Computers at the Heritage Centre 10am – 12 noon
Thursday	5 <sup>th</sup>	Jon Boden in Concert Long Whatton Community Centre 7.30pm
Tuesday	10 <sup>th</sup>	Zumba at the Village Hall 8.15 – 9.15 pm
Thursday	12 <sup>th</sup>	Coffee, Cakes & Computers at the Heritage Centre 10am – 12 noon
Saturday	14 <sup>th</sup>	Flower Arranging Workshop at the Village Hall 2pm – 4pm
Sunday	15 <sup>th</sup>	Singing for Fun Taster Session Village Hall 6.30 - 8pm
Tuesday	17 <sup>th</sup>	Retired Residents lunch at the Village Hall 1pm
Tuesday	17 <sup>th</sup>	Zumba at the Village Hall 8.15 – 9.15pm
Thursday	19 <sup>th</sup>	Coffee, Cakes & Computers at the Heritage Centre 10am – 12 noon
Friday	20 <sup>th</sup>	Jazz Concert All Saints Parish Church Long Whatton 7.30 pm
Saturday	21 <sup>st</sup>	Flower Arranging Workshop at the Village Hall 2pm – 4pm
Tuesday	24 <sup>th</sup>	Zumba at the Village Hall 8.15 – 9.15 pm
Thursday	26 <sup>th</sup>	Coffee, Cakes & Computers at the Heritage Centre 10am – 12 noon
Saturday	28 <sup>th</sup>	Coffee Morning at the Church 10am – 12 noon

## JUNE

18<sup>th</sup> & 19<sup>th</sup> Civil War and Scarecrow Weekend

## SEPTEMBER

Saturday 10<sup>th</sup> Diseworth Village Show at the Village Hall

	<b>Castle Donington Farmers’ Market</b>	
	St Edwards C of E Primary School, The Dovecote,	
	9th April 14th May	2nd Saturday of every month from 9am - 12.30pm

# Welcome to the April issue of the *Diseworth Dialogue.*



“*The times, they are a-changing*” wrote Bob Dylan. And that is certainly true in Diseworth at the moment. WINGS are leading a feisty campaign against the airport over the possibility of a solar panel farm on Grimes Gate, details of which can be found within and they need our support.

But that’s enough gravity, on to the fun stuff! This month’s magazine is full of great things happening in the village over the next few months. Whether you want to have a go at ballroom dancing, go to an Arts and Crafts group, or enter your tomatoes at the newly named Village Show, it’s all in this issue.

Easter is nearly upon us, and there will be a Children’s Activity Morning at the church on Good Friday. Before that, there are tea and cakes at the Village Hall in aid of the Air Ambulance on the 9<sup>th</sup> and a Heritage Trail of Diseworth on the 10<sup>th</sup> of April.

The Scarecrow Weekend is not that far away and if you haven’t decided which side to support, a short history of the Civil War can be found within to help you make up your mind. (I will resist the urge to compare the English Civil War with the current battle we are having at the moment, but wouldn’t it be fun if the EMA management in charge of the solar panel idea could be persuaded to take part that weekend!)

Congratulations to Manor Farm and Long Whatton Post Office & Village Store for receiving their respective awards. Both are very well deserved.

Finally, I would like to bring to your attention, a letter that was submitted to me by a concerned reader. It is a scam letter basically asking for money. Many of us have had emails like this; they normally start “Hello Dear, let me introduce myself” and are from people whose names we can’t pronounce! These con artists are now sending letters in the post as well. So if you get one, don’t even read it. Just bin it!

Don’t forget Mother’s Day on the 3<sup>rd</sup> – you can even make a flower arrangement for your mum at the Village Hall on the 2<sup>nd</sup>.

Happy Easter to you all

# *St Michael and All Angels Parish Church*



photograph Julia Silifoe

## Letter from the Rectory

### *April fool!*

It's tempting to leave the letter there! However, since April fool is only allowed up till 12 noon perhaps I'd better write the letter for the rest of April.

April 1<sup>st</sup> and April as a whole has become a bitter sweet month for me. April 1<sup>st</sup> is my Grandfather's birthday – he always used it as an excuse for playing the fool! Sadly he died a year this March. April was also a horrible month last year for all sorts of other reasons on top of my bereavement. So I write this letter in a somewhat reflective mood.

I say it is a bitter sweet month and yet I have only given you the bitter. So what makes it sweet? Well, for a start, spring is finally springing. As I write, the sun is shining, the dog is dozing in the warm patch in front of the window, and on top of that, I know that Lent is nearly at its end and we have the climax of the Gospel to proclaim!

My story is not unique – we all have months or years that are our 'annus horribilis' to coin a phrase. And yet we can take heart from Lent and Easter. During Lent and the Passion Jesus is tempted to despair. Yet his trust in God enables him to see the glory which is to come. Whilst we may not have the luxury of knowing what our faith in God will achieve on the bigger scale, we do know that if we remain in Him, He will remain with us – and promises us that "all things work together for good to them that love God." Romans 8:28. This is not to say that God causes the evil that befalls us – God did not invite sin into the world! But God can and does use all opportunities to work His goodness and love, even another death – a death on the Cross. That is our assurance and our joy.

*Happy Easter to you all.*

*Love Gill*



# *St Michael and All Angels Parish Church*

## **TEAM RECTOR**

Revd Gill Turner-Callis      The Rectory, 24 Nottingham Road,  
Kegworth, Derby. DE74 2FH.      01509 673146  
e mail kandhtm@gmail.com

## **TEAM VICAR**

Revd Tony Edmonds      The Rectory, Presents Lane, Belton  
Leicestershire. LE12 9UN      01530 223447  
e mail t.e.edmonds@btconnect.com

## **READERS**

Mrs Celia Harris      01509 844141  
Mrs Nadine Hawkins      01509 646957  
Mrs Audrey Hunt      01509 646478

## **CHURCHWARDENS**

Mr David Bird      01332 810381  
Mrs Muriel Howe      01332 850338

Please note that Gill takes Monday as her day off and Tony has Friday as his day off.

For **Baptism** enquires, please contact Gill. Baptisms in the benefice occur on the first Sunday of the month in most of the churches on a first come first served basis.  
For **Funerals**, please contact Gill. The local undertakers have now been asked to contact Gill direct. Gill will then make arrangements for a member of the team to take the funeral.  
For **Wedding** enquiries and bookings, please contact Gill.

## **Other Benefice Services, Meetings and Social Events in April 2011**



April 2 <sup>nd</sup>	Saturday	Hathern Church Coffee Morning 10am-12noon
April 3 <sup>rd</sup>	Sunday	Hathern Church Music Café, 6pm-8pm
April 5 <sup>th</sup>	Tuesday	Kegworth House Group 8.00pm
April 6 <sup>th</sup>	Wednesday	Hathern House Group 7.30pm
April 9 <sup>th</sup>	Saturday	Kegworth Church Coffee Morning 10am-12noon
April 16 <sup>th</sup>	Saturday	Long Whatton Coffee Morning, Friendship Centre
April 25 <sup>th</sup>	Monday	Benefice Bible Study, 33 Green Hill, Hathern 7.30pm
April 27 <sup>th</sup>	Wednesday	Benefice Praise Evening, Hathern Church, 7.30pm

**There will be no Coffee Morning in Diseworth in April**

# *St Michael and all Angels Parish Church*

## Services & Locations for April 2011

	<b>Time</b>	<b>Service</b>	<b>Location</b>
April 3rd Mothering Sunday	8.00am	BCP Holy Communion	Hathern & Kegworth
	<b>10.30am</b>	<b>All Age Worship</b>	<b>Diseworth</b> , Belton & L. Whatton
		Family Service	Hathern & Kegworth
	6.15pm	CW Morning Prayer BCP Evensong	Osgathorpe Kegworth & Belton
April 10 <sup>th</sup>	8.00am	BCP Holy Communion	Belton & Kegworth
	9.00am	BCP Holy Communion	Osgathorpe
	<b>10.30am</b>	<b>CW Holy Communion</b>	<b>Diseworth</b> , Hathern, Kegworth & L.Whatton
	6.15pm	Lambing Service BCP Evensong	Long Whatton Kegworth
April 17 <sup>th</sup> Palm Sunday	8.00am	BCP Holy Communion	Kegworth
	<b>9.00am</b>	<b>CW Holy Communion</b>	<b>Diseworth</b>
	10.30am	CW Holy Communion	Belton & L. Whatton
	6.15pm	Family Service BCP Holy Communion BCP Evensong	Kegworth Hathern Kegworth & Belton
April 18th	2.30pm	CW Holy Communion	Hathern
April 19 <sup>th</sup>	12.30pm	CW Holy Communion	Belton
April 20 <sup>th</sup>	9.30am	BCP Holy Communion	Kegworth
April 21 <sup>st</sup> Maundy Thursday	6.00pm	Passover & Holy Communion	Long Whatton Friendship Centre
	6.00pm	Passover & Holy Communion	Kegworth
	8.30pm	Stripping of the Altar & Vigil	Kegworth
April 22 <sup>nd</sup> Good Friday	10.00am	Family Service & Activities	Hathern
	<b>10.30am</b>	<b>Activity Morning &amp; Service</b>	<b>Diseworth</b>
	11.00am	Ecumenical Service	Kegworth
	1.00pm	Devotions	Kegworth
	6.00pm	Compline	Osgathorpe
	7.30pm	BCP Evensong Compline Ecumenical Service	Belton Hathern L. Whatton Methodists



## *St Michael and all Angels Parish Church*

	<b>Time</b>	<b>Service</b>	<b>Location</b>
April 24 <sup>th</sup>	8.00am	BCP Holy Communion	Hathern
Easter Day	<b>9.00am</b>	<b>CW Holy Communion</b>	<b>Diseworth</b> & Osgathorpe
	10.30am	CW Holy Communion	Belton, Hathern, Kegworth & L. Whatton
	6.15pm	BCP Evensong	Kegworth
April 27 <sup>th</sup>	7.30pm	Benefice Praise Evening	Hathern

**Morning Prayer held in Diseworth Church 8.30am-9.00am every Thursday**

### **Regular Weekday Services**

Tuesday	12.30pm	CW Holy Communion, Belton Church
Wednesday	9.30am	BCP Holy Communion, Kegworth Church

## **Lessons and Readers for April 2011**

	<b>Time</b>	<b>Readers</b>	<b>Sidesman</b>
April 3 <sup>rd</sup> Mothering Sunday	<b>10.30am</b> 1 <sup>st</sup> Reading: 1 Samuel 16.1-3 2 <sup>nd</sup> Reading: Ephesians 5.8-14 Gospel: John 9.1-41	S Bird	
April 10 <sup>th</sup> Lent 5	<b>10.30am</b> 1 <sup>st</sup> Reading: Ezekiel 37.1-14 2 <sup>nd</sup> Reading: Romans 8.6-11 Gospel: John 11.1-45	M Howe D Blenkinsopp M Gidlow	G Stone
April 17 <sup>th</sup> Palm Sunday	<b>9.00am</b> 1 <sup>st</sup> Reading: Psalm 118.1-2,19-29 2 <sup>nd</sup> Reading: No Reading Gospel: Matthew 21.1-11	D Cherry S Brompton	M Hening
April 24 <sup>th</sup> Easter Day	<b>9.00am</b> 1 <sup>st</sup> Reading: Jeremiah 31.1-6 2 <sup>nd</sup> Reading: Acts 10.34-43 Gospel: John 20.1-18	D Griffin A Stone S Bird	M Howe

*If you are unable to read on the date shown please arrange for someone else to do so.*

*St Michael and all Angels Parish Church*

# Children's Good Friday Activity Morning

We will be having an activity morning for children  
in the church on Good Friday,  
22<sup>nd</sup> April from 10.30am until 12noon.



Children are welcome to come at 10.30am  
and will spend the morning doing a variety of  
craft activities for Easter.

There will be a  
small charge of  
£1 per child.

Parents are invited to join us at  
11.30am for refreshments,  
which will be followed by a  
short family service.



## Church Flowers and Brasses

April 3<sup>rd</sup>  
April 24<sup>th</sup>

### Flowers

Mrs R Harris  
Mrs A Brooks

### Brasses

Mrs R Harris  
Mrs R Smith



# The Oscars discover Manor Farm Shop, Long Whatton

The 'Rural Oscars' as they are known are awards run and judged by the Countryside Alliance. This is their sixth year and they champion community values and commitment to produce.

Proud winner of the Local Food Award for the whole of the East Midlands is your very own village farm shop, Manor Farm here in Long Whatton. You have an Oscar winner here in the middle of the village.

The awards Director, Jill Grieve and the visiting judging panel described Manor Farm Shop as *"A really dynamic enterprise which is high quality and run with passion and good humour. There is a dedicated in-house Master Butcher as well as on-site artisan baker. School tours emphasise a motivated approach to taking the local food message to the next generation. The team's commitment gives the whole farm a great atmosphere, and if local produce depends on families like the Matravers and their staff then it is in safe hands"*.

The awards attract 1000's of nominations and are whittled down to twelve regional winners who in the judges' eyes celebrate the characters, produce, traditions and enterprises of the countryside.

We will try not to let this go to our heads. Well, not too much, and we will still be staying up late in the lambing shed and mucking out the cows and here in the shop in what sometimes feels like 24/7. What I am really so pleased about is that this actually recognises that we are offering the genuine article – a farm shop selling its own and other local farmers produce to the people living around it and maintaining the traditional farming, butchery and bakery skills.

And as they say in all Oscar acceptance speeches, thank you to all those who support us, we literally would not be here without you!!

*Vivienne Matravers*



*Catholic Church of the Risen Lord.*

Hillside, Castle Donington

Mass every Sunday 9am



*Kegworth Methodist Church*

High St. Kegworth



**Sunday Services**

Morning Worship - 10.30am

Praise Worship – 6.15pm (First Sunday each month)

Minister – Rev. Diane Grice. Tel. No. 01509 672479



*Kegworth Baptist Church*

High St. Kegworth



**Sunday Services**

Morning Worship & Sunday School – 10.30am

Lead Deacon: Paul Phillips 01509-551464

[www.kegworthbaptist.org.uk](http://www.kegworthbaptist.org.uk)



# William Arthur Fletcher 1924 – 2011

Arthur was born in the Keeper's Cottage, Emmerly Lane, Diseworth (now known as Longmere Lane) and the family later moved to Hall Gate Lane.

The eldest son of William and Annie Fletcher, Arthur had many brothers and sisters, there were 13 children in all and so Arthur was never short of someone to play with. He attended Diseworth School and Castle Donington High School. Each day after school he was straight over to Marshall's Farm and when he left school he worked there for several years.

He later took up driving for Barker's and Sherwood's at Long Whatton. This included taking loads of ballast to the east coast during the severe floods in 1953.

He met Barbara, who was in the Land Army at Woodhouse Eaves, and they married in 1949 in Leicester and they then moved into 13, Page Lane, Diseworth. They had 3 children, Graham, Julia and Pauline.

Arthur enjoyed his hobbies, mainly bell ringing, gardening, holidays and wine making.

He was a lovely brother, friend and a very caring father and will be sadly missed by all.

Arthur's last bell ringing was for the Royal British Legion Service in November.

**“Life's Work Well Done.”**



---

## ***FEBRUARY FILL DYKE***

The old weather lore about “February fill dyke” came true this year, which is what we expect and actually need in February. Grass and crops won’t grow when the warmth comes in spring without moisture in the soil.

Unfortunately, the rain was accompanied by some rough and blustery winds more reminiscent of March rather than February. Blustery winds cause quite a lot of irritation and aggravation around the farmyard. If you put something down such as a feed bag or a bucket, it is unlikely to be in the same place when you want it again. At the least it will have been caught up by a gust of wind and have ended up in a mucky puddle. At worst it will have decided on a new career as a flying machine and sailed off, all but briefly, into the air, only to crash land unceremoniously somewhere inconvenient. If there is a westerly gale their destination is often the home field. Over the years I have had to retrieve numerous items that have fallen victim to the wind,

before they end up being blown into the brook.

Feeding the cattle can be a frustrating job during gusty winds. Silage being churned out of the feeder wagon into the cattle troughs has a consistency similar to lawn clippings. If the wind is blowing against the stream of silage emerging from the feeder, some of it can get chucked back away from the trough and has to be forked in afterwards. A similar problem is faced when feeding out corn on top of the silage. As you can imagine, the corn mix is very dusty. Naturally the wind whips up the dust as Will shakes it out of the bags; it gets in his eyes, and all over his boiler suit and woolly hat. When this grey shape comes muttering through the door on a blustery day, I know it is time for breakfast.

Most of the doors in the farm yard are very large and covered with metal sheets. They make excellent wind catchers. Either you are battling to force a door open against the wind, or it is being snatched away from you and smashes with a bang against

a wall. Throw into the mix the added difficulty of trying to carry a bag of feed, a wedge of straw or a tray of tea mugs and you have all the ingredients for making an easy job difficult.

One advantage of a period of wind and rain is that assorted items always wash down the brook and lodge on the brook bank. Usually amongst these items are at least a few balls of various sizes. This is a delight to my dog Roy, as he loves to play ball, and it doesn't even matter what state they are in as he prefers a burst one that he can get his teeth into. So now I have



two flat footballs stashed away for fun in the field and more importantly for Roy to bite and chew instead of trying to bite the back of the mower when I am mowing the lawn.

---

## Diseworth Millennium Meadow



The Millennium Meadow is available for use by all inhabitants of Diseworth and Long Whatton at any time. It is the perfect place for a quiet stroll, especially in an evening or very early in the morning. There should be plenty of Spring bulbs and Primroses flowering by now.

All the trees are thriving and some are now quite an impressive size. We are still planting a few trees each year, mostly smaller or shrubby species to

provide infill and undergrowth. We also have a number of previously planted trees as yet without sponsors, so would welcome any enquiries.

If you plan to have a picnic there, please do. Just let us know in advance if a large gathering is planned. Dogs are welcome in the Meadow provided they are under control and not allowed to foul the site. The small gate is always unlocked. Please ensure it is secured when you leave. *Contact: Pat Guy 811119*

# Home Composting

by Master Composter  
Meg Galley-Taylor  
meg@taylor.it



**April:  
getting started**

So you've got your compost bin and found a good site for it so that it is in a warm place where it can get the sun and heat up, it sits on soil or grass and is conveniently near to the kitchen door and you want to get started. You need to remember that the composting process is done by living organisms that have similar needs to us – food, water and oxygen or in composting terms materials, moisture and air.

**Materials:** Composting organisms need a lot of carbon for energy and smaller amounts of nitrogen for cell growth and development and so balance is needed. The carbon is found in brown materials such as cardboard, dry leaves and woody prunings. Nitrogen is found in green materials such as kitchen waste, grass clippings and young weeds. If there is too much of this green material it can go rather slimy and I am sure everyone is familiar with the horrible mess that grass clippings turn into if you just leave them in a big heap. The idea is to get a balance in the bin and there is more about this later.

**Water:** This is essential for the process, but again balance is important. Too much green material can make it too wet so it looks slimy, waterlogged and smells nasty. Add some browns. If it's too dry things don't break down very well and you may get ants nesting in the bin so add some more greens. The compost should feel like a wrung-out sponge so if it is too dry leave the lid off when rain is expected but remember to replace it after the rain to keep the warmth and moisture in.

**Air:** Effective composting needs lots of air and if there isn't enough in the bin then anaerobic microbes may take over the decomposition process and produce bad smells. Traditionally air was introduced into compost heaps by turning but as we all have better things to do, air can be introduced by having the right mix of materials and including things like corrugated cardboard, eggs boxes and the middles of toilet and kitchen rolls that can act as 'chimneys' to get air to the middle. Putting a layer of twigs or branches at the bottom of the bin can give it a good start by allowing a vertical flow of air. You can also simply stick a broom handle down through the compost and stir it around a bit to create air holes.

**Starting to make compost:** You can make compost simply by adding compostable items to a compost bin when you feel like it. It will all rot eventually but it may take a rather long time so you might be better to take the 'COOL HEAP' route outlined here - you



could improve things dramatically. If you want to produce more compost in a short time, and are able to put more effort into it, there is also the 'HOT HEAT' route but I will leave that for another month.

### **The Cool heap route**

**Step 1.** Place a few woody plant stems or small twigs on the bottom first, especially if using a plastic bin, as this will improve the air circulation and drainage. Collect together a batch of compost materials that will make a layer of at least 30cm (that's about a foot in old money) or more in the compost bin. Weed the garden, mow the lawn, tear up that cardboard box, empty the kitchen bucket! Aim for a mix of green and brown items.

**Step 2.** Start filling the bin. Spread the ingredients out to the edges and firm down gently. Alternate green and brown items, or mix them together first. Unless items are already wet, water well every 30-60cm.

**Step 3.** Continue to fill the bin. Items can be added individually, but a bigger batch is preferable. If most of what you compost is kitchen waste, mix it with egg boxes, kitchen paper, loo roll middles and similar paper products to create a better balance. Some grass in a compost bin is good because grass is an activator and will speed up the breakdown of organic materials but too much is a problem. If you find that your compostable waste is restricted to grass cuttings and that it is difficult to properly balance this with other materials one option is 'grass-boarding' where thin layers of grass are layered between torn up cardboard. The result can be excellent compost, which is weed-free and doesn't contain large particles or lumps of material. If you want to you can give it all a bit of a stir with a broom handle but don't worry if you can't.

**Step 4.** When the container is full - which it may never be as the contents will sink as it composts - or when you decide to, stop adding any more. If you have a second compost bin this is the time to start this one off whilst you wait for the first to finish the process.

**Step 5.** If you only have one compost bin and can't leave the bin long enough for all the contents to break down then simply either lift the container off the compost or remove the compost from the container. If the lower layers have composted, that is they are brown and crumbly, use this on the garden. Mix everything else together well; add water and green material if it is dry, or dry material if it is soggy and then put it back in the bin and leave it to mature.

When your compost is ready it should be an odourless, crumbly, brown material, and by digging it into your soil in early spring or late autumn you will improve the soil structure, it will also act as a fertiliser. Mixing with clay soil will improve drainage and aeration, whilst mixing with sandy soil will slow over-draining and hold essential moisture. Using a 3" mulch of compost around the garden helps retain moisture and prevent weeds. It releases its nutrients into the soil and improves texture. Worms will pull the mulch down into their burrows, passing it through their gut breaking it down even more and mixing it into the soil at the same time.

And all this from garden and kitchen waste. Next month I will be advising in detail on what can and can't go in the bin.

# A NEW DISEWORTH HERITAGE TRAIL

Over twenty years ago Diseworth Local History Society compiled a Diseworth Trail, highlighting houses and areas of interest around the village. The Trail was very popular and was used for guided walks around Diseworth and for personal interest. The drawings showed many fine features in Diseworth.

But times and the village have changed and encouraged by the Cultural Services Manager at NW Leicestershire who offered a grant towards its production, a new Heritage Trail was considered. Pat Guy has masterminded this and we can proudly announce it is very much an in-house production. Those responsible for photographs, drawings, design and printing are all based in the village. With much effort from Ruth Smith we now have a superb leaflet with well over twenty photographs and illustrations around a map of the village identifying the interesting sites.

For newcomers over the years and also for long established residents, the Heritage Trail offers a fascinating overview of a village which has undergone many changes over the past few hundred years, yet has maintained a great deal of its old character. A brief look at the contents indicates what has gone before (for example the sheepwash where annually farmers brought their sheep, flooded the road and sent the sheep through it) and what is still here. The Parish Church, the oldest building in Diseworth, merits a good section of the Trail which explains its history including the interesting church clock. For young people attending Diseworth School there is a drawing of the old school which was demolished to make way for the current building and also a description of a much earlier school, which is now a private house. Other sites of interest include the old Post Office- grocer's shop -bakery, Lilley's Cottage and the Town End Brickworks. The Trail identifies an active village, often referred to as Diseworth Town. It also had a work house, now a private home.

Hall Close, traditionally held to be the site of the old Hall or Manor House of Diseworth is marked on the Trail, as well as Hall Cottage,

Old Hall Farm and Hallfield Farm, indicating a community entrenched in the land. The continued existence of working farms in the village supports this theory. The Diseworth Heritage Trail covers a wide area and is designed to be used as a village history guide on its own but there will also be opportunities to follow guided walks when further detail will be given. Supporting the Trail there are a number of books on the history of the village available for purchase.

The Diseworth Heritage Trail will be launched on Sunday 10<sup>th</sup> April at 3pm in the Diseworth Heritage Centre. Everyone is invited to attend, tea and cakes will be available, and there will be an exhibition of the properties, old and new for perusal.

Two Guided walks are planned, one for 20<sup>th</sup> July 2011 at 11am and one on 3<sup>rd</sup> August 2011 at 11am. Each walk will last approximately two hours and cost £3 which will include a copy of the Trail. Light refreshments will be available in the Heritage Centre at the end of the walk. Purchased separately the Trail will cost £1.50

*Nikki Hening*



## THE DISEWORTH HERITAGE TRAIL

will be launched on

**Sunday 10<sup>th</sup> April at 3pm**  
**Diseworth Heritage Centre**

Tea and Cakes provided

Exhibition of houses, old and new

and views around the village

# Sue and Karen's Recommended Read

## Karen's choice: Penguins Stopped Play



This was written by Harry Thompson, who has written several books and also designed the TV programmes 'Have I got News for You', 'Da Ali G Show' and 'They Think Its All Over'

amongst many other radio and TV ventures.

This is the true story of an exceptionally amateurish cricket team known as the Captain Scott Invitation XI. The Scott bit because of his heroic determination and the invitation bit because Thompson and co. recruited anyone into the team, whether or not they could play cricket. They become an eleven with a plan; to simply play cricket on all seven continents, taking on the world at their beloved game.

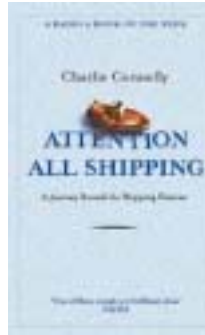
It is a book of eccentricities, cricket obsession, travel, adversity, nationalities, losing, lateness, bravery, beer and humiliation (Ian Hislop from 'Have I got News for You' up to his waist in manure). It's batty, witty, sharp and packed with so much humour that it provides a constant laugh out loud experience, even if you don't much like or understand cricket (that's me then).

Thompson's co-founder member of the team, Marcus Berkmann also wrote and published earlier books about the Scott XI in Rain Men and Zimmer Men, but

for me Harry Thompson's tale will remain the more outstanding, partly because he died in 2005 after finishing the book but before it was published. Why he died and what happened is really the conclusion of the book with its poignant last page and humour to the last.

Cricketers, get this book for your non-cricketing partners to read while you play, then when cricket season is over, you can dip into this book for a quick fix.

## Sue's Choice: Charlie Connelly - 'Attention All Shipping', a journey round the Shipping Forecast



For those of us that listen to the soothing sounds of 'Sailing By' late at night on Radio 4, and then fall asleep to the slumber inducing tones of the Shipping Forecast, with evocative names, - '.....Sole, Lundy, Fastnet,....' then this is the book

for you.

Charles Connelly sets himself a time limit of one year to visit all the areas mentioned in the forecast, and the result is part quirky travel book, part fact finding mission, part bizarre observations. We are taken on a voyage round the British Isles to discover amazing things that almost defy belief. Historical snippets to tickle the mental palette, and personal stories connected to places that are visited.

It is a book that can be dipped into as the fancy takes.

# first stage drama

Exciting New Drama Classes for 7 -9 year olds

Leicestershire based company Chorus Theatre will be running a pilot drama project for children aged between 7 and 9 years old at Diseworth Village Hall for 10 weeks starting in early May.



Chorus Theatre has managed and facilitated the D.Arts Young People's Drama group for 10 - 13 year olds in the area in since 2007 and now the company is creating a new group for younger children.

The drama project will be led by a professional theatre director and will cover basic acting skills, improvisation and building the confidence of the children. The workshops will lead to a short performance at the end of the project for family and friends.

The workshops will take place on Tuesdays after school in the village hall in Diseworth. The project is open to any children in the area aged between 7 and 9 years old and no experience is necessary. The cost for this project will be £50 in total, which can be paid in two instalments of £25 if necessary. Places MUST be booked in advance.

For more information and to book a place please contact us on:



Email: [andrew@chorustheatre.co.uk](mailto:andrew@chorustheatre.co.uk)  
Telephone: 01530 417324  
Mobile: 07779 973982  
Website: [www.chorustheatre.co.uk](http://www.chorustheatre.co.uk)

# Diseworth Village Hall News



The new Diseworth Village Hall Website is up and running at [www.diseworthhall.org](http://www.diseworthhall.org) We are adding content to the site as fast as we can and you can find details of a wide range of events and even book or reserve tickets online. You can also subscribe to a monthly email newsletter from the hall which will contain details of all of the events that are planned.

The hall also has its own Wireless Internet Hotspot which can be used free of charge whilst in the hall if you have a mobile phone or notebook equipped with a wireless facility.

The African Drumming taster session took place in February; it was great fun and everyone that attended had a really good time. Our thanks go to Sue Roberts for running this session.

This month we are holding a Beetle Drive on Friday 15<sup>th</sup> this will be fun for the whole family. On the 17<sup>th</sup> April you have a chance to have a go at learning to dance. We are holding a Ballroom & Latin 'Taster' lesson where you can learn basic steps of the Waltz & Cha Cha. Don't be afraid to come along and have a go even if you think you dance with two left feet! No experience is needed and we also would welcome anyone that already knows a step or two. For further details of these events please see our main advertisements or log on to the Village Hall website.

Over the coming weeks we will be collecting your 200 club subscriptions for 2011/2012. We still have 25 numbers to sell and would ask if you are not a 200 club member yet, please contact Jane or look at the website for details of how to join and help support your Village Hall.

At the same time as collecting your 200 club subscriptions we will be delivering a survey and would ask that you complete this to let us know what you would like from your Village Hall.

The Village Hall committee has taken over the running of the Diseworth Flower Show from Pat Guy who has run it so well over the past years. This is an exciting step for us and we are looking forward to organizing this event over the coming months. This month we have released the show classes so you can begin planning your entries for September. Look out for more announcements in future *Dialogue* issues.

Please look out for future events in the Diseworth Diary and on the website. If you have any ideas for future events/ activities at the hall, please let us know.

[www.diseworthhall.org](http://www.diseworthhall.org)

# Diseworth Village Show

Saturday 10<sup>th</sup> September



This year the Village Show will take place on Saturday 10<sup>th</sup> September. We have published the Schedule of Classes in this issue with more information to follow over the coming months. Look for the changes to the classes with the \* next to them.

To highlight just a few

- Class 61 & 64  
The sunflowers this year are to be grown in a pot & brought to the Village Hall on the day. The children's sunflower seeds will be distributed in school before the Easter holidays
- Class 38 & 39  
Look out for the 'Just for Fun' classes
- Class 60  
Knitting for Premature Babies – Bonnie Babies Charity  
After judging this category the items will be sent to the Bonnie Babies charity who distribute knitted garments to hospital units across the UK. Please help support this charity by entering this class. The patterns will be available in the May issue of the *Dialogue*.

## Diseworth Village Hall 200 Club

April 2011

Prize	Number	Name	Amount
1 <sup>st</sup>	165	S Roberts	£30
2 <sup>nd</sup>	120	K Jepson	£20
3 <sup>rd</sup>	46	G Brooks	£15
4 <sup>th</sup>	36	P Tudor	£10
Bonus Draw 1	49	M Steven	£45
Bonus Draw 2	8	W Jarrom	£31

Table Tennis  
now available to  
book hourly  
at the village hall  
no experience  
necessary

contact Dave Adcock  
for  
details  
01332  
850337



**DISEWORTH VILLAGE SHOW SATURDAY 10<sup>th</sup> SEPTEMBER 2011**  
**SCHEDULE OF CLASSES**

**FLOWERS**

- 1 Roses - 3 blooms of one kind
- 2 One Perfect Rose
- 3 Vase of 3 Sprays of Chrysanthemums\*
- 4 Vase of 3 Ball Flowered Dahlias – flowers over 2" diam. –small decorative\*
- 5 Vase of 3 Pompom Dahlias - flowers not more than 2" diam.
- 6 3 Cacti Dahlias
- 7 3 Decorative Dahlias
- 8 One Perfect Dahlia – any type
- 9 Vase of 3 cut flowers – any variety\*
- 10 Fuchsia - any variety – 1 plant in a pot, any size
- 11 A Pot of Herbs
- 12 1 Orchid - in flower - in pot, any size
- 13 Flowering pot plant - pot maximum 8" diam.
- 14 Flowering pot plant - pot any size over 8" diam.
- 15 Foliage pot plant - pot maximum 8" diam.
- 16 Foliage pot plant - pot any size over 8" diam.

**FLOWER ARRANGEMENTS**

- 17 An Arrangement with the theme "Musicals" – any size \*
- 18 An Arrangement with the theme "Autumn colours" – any size\*
- 19 A Petite Arrangement of your choice – max. 25cm. (9") in any dimension

**FRUIT AND VEGETABLES**

- 20 5 Cooking Apples
- 21 5 Dessert Apples
- 22 5 Kidney Beans (runner beans)\*
- 23 3 Beetroot
- 24 5 Red Tomatoes\*
- 25 5 Novelty Tomatoes - yellow, striped, etc
- 26 Cherry Tomatoes on the vine\*
- 27 1 Cabbage
- 28 5 Onions from sets, dressed. \*
- 29 3 Onions as grown, not trimmed, roots washed
- 30 1 Marrow
- 31 5 Potatoes
- 32 3 Leeks as grown
- 33 3 carrots, with tops
- 34 Any other vegetable not mentioned above
- 35 Any other fruit not mentioned above
- 36 Novelty Marrow Species - Squash, Gourd, Pumpkin, Courgette, Melon, Cucumber etc
- 37 The Diseworth Harvest Basket - 6 different types of fruit or vegetable. Class Restricted to Diseworth Residents.

**JUST FOR FUN – open to Adults & Children**

- 38 Flower or Flower Arrangement made from Plasticine or Play-doh\*
- 39 Fruit or Vegetable made from Plasticine or Play-doh\*



## HOME MADE PRODUCE

- 40 Small Cheesecake – any variety - Diseworth Men only class\*
- 41 A Homemade Loaf - any type of flour / grains - your own recipe
- 42 A Cake of Your Choice - any flavour, any fruit, iced or not. Please label to help the Judge!
- 43 Fruit Cake - to a recipe of your own choice - will not have to be sold
- 44 Victoria Sponge - see recipe
- 45 6 Scones for teatime
- 46 3 Cup Cakes – different decorations on each\*
- 47 A Fruit Crumble - in own container - will not have to be sold
- 48 Jar of Jam
- 49 Jar of Lemon Curd
- 50 Jar of Chutney
- 51 Jar of Marmalade
- 52 6 eggs in a basket

## PHOTOGRAPHY COMPETITION

- 53 “Flowers” any size\*
- 54 “A Funny Situation” any size\*
- 55 “My Pet(s)” any size\*
- 56 “Movement” any size\*

## ART & HANDICRAFTS - ADULTS

- 57 Art - any medium - eg. oil, water-colour, pastel, pencil, acrylic, pen & ink, paper-based collage
- 58 Textile-based Craft - any medium - embroidery, knitting, crochet, weaving, collage, dress-making
- 59 New From Old” – A Craft item made from re-cycled material - paper, wood, metal, fabric etc
- 60 Knitting for Premature Babies – Bonnie Babies Charity – will be sent to the charity after show\*
- 61 Adult Tallest Sunflower – in a pot, bring to the hall on the day\*
- 62 A Home-made Greetings Card – any Occasion

## THE DISEWORTH HERITAGE TROPHY

- 63 A Painting or Drawing of a Scene in Diseworth

## CHILDREN'S CLASSES Any age unless specified

- 64 The tallest sunflower (grown from seed) - in a pot, bring to the hall on the day\*
- 65 An Egghead in an Egg Cup\*
- 66 A Handicraft item –embroidery, knitting, sewn items, toys or models, carvings, woodwork.
- 67 Small Lego Model of your own design\*
- 68 A Finger Painting - “A Farm Animal “ - open to children under 5\*
- 69 “My Favourite Cartoon Character” - any medium - paint, crayon, pen, collage etc. - Aged 5 to 9.\*
- 70 “New for Old” – A Toy of any nature, made from recycled materials
- 71 A Home-made Card – any Occasion
- 72 A Magazine derived Collage of your interest/hobby – max size A3\*
- 73 Cookery – 3 Cup Cakes – different decorations on each\*
- 74 A Vegetable Monster

# Cyril the Fox on a Mission

Hi Diseworth and a Happy New Year to you all.

I was strolling through the village the other evening when I came across a couple of people deep in conversation outside the Bull, late on. Now these two characters are well known for being forthright so I thought I'd stop and have a listen. Yes I know we foxes can be nosy and inquisitive but how are we to find out village goss if we don't take such an opportunity? Anyway I sidled up and sat on the bottom step and was horrified to hear what was being said. Apparently those nice, generous neighbours of ours at the airport want to build on 20 acre field at the top of Mill Hill. Some kind of wind farm, solar farm, nuclear power station farm or similar but certainly not a farm farm and now I'm worried!!

I'm not so bright but if this happens then what next, perhaps a casino or a strip club, you never know!! Everything in its proper place I say.

I realise that the airport is here to stay and has to grow, that's macro economics for you. A fair number of you humans earn a living directly or indirectly as a result so let's not be narrow minded. But as good neighbours with stashes of land on the other side of the road you'd think they would pay due respect to poor down trodden us and not stir up the hornets' nest with such hare-brained ideas.

But now they have!!

What's been floated has antagonised me and I'm thinking of starting an action group for foxes, badgers, my bird mates and any other eco warrior I can think of, as we can't lie back and accept even the thought of such a prospect.

Now you humans have an advantage because you already have a very successful pressure group and I know you've had a circular letter because that's where I had my idea from. Make sure you support it in any way possible because if you don't you may well live to regret it!!

Anyway, that's all for now and I'll let you know how us animals fare.

Keep the faith.  
Regards

*Cyril.*

p.s. Mrs. F is in the pink.



'Steve McQueen, still alive and on a mission .....  
The Great Escape of solar panels'



Dan Snee

# Sudoku

by Anna Groves

Complete the grid so that every row, column and 3x3 box contains every digit from 1 to 9 inclusive.

Solution on page 42

3	6			8	9
	7	9	6	5	
8					2
7	3		6		2 8
		8		1	
5	6		4		3 7
9					6
	8	1	5	4	
2	4			7	1

# CIVIL WAR IN DISEWORTH

weekend 18th/19th June 2011

## Are you a Cavalier or a Roundhead?

A little history

**Cavaliers** supported and fought for the King. They comprised mostly of noblemen and women, some of whom were Members of Parliament. They wore their hair long and curled to replicate the King's appearance and fancy clothes with lace and frills. They rode horses and the name Cavalier comes from the French word 'cheval' for horse and 'chevalier', one who rides a horse.



**Roundheads** were Puritans who did not follow the Catholic rituals and colourful vestments; they were the more militant Members of

Parliament, who called for reform for all. They cut their hair very short which is why they were called Roundheads and wore plain and simple clothes. They were led by Oliver Cromwell.



When Charles I raised his standard at Nottingham in August 1642, people throughout the country were forced to choose which side they were on. But for the ordinary people who lived in the villages, the decision was whether they were for the King or Cromwell. In the majority of cases this choice was made for them as they simply joined the army that reached their city or town first. Support remained much the same throughout 1642 and 1643, but during 1644 and 1645 people began to change sides as

Cromwell's New Model Armie took control...

After he was captured the trial of Charles I lasted for 7 days, from January 20th to 27th. Charles was in court for the first 3 days and the last day. But the King declared the court was invalid and refused to speak. On days 4, 5 + 6 the court met without him and heard evidence against Charles. The King was found guilty and he was executed on January 30th 1649.

The Sealed Knot, who will be camping in Diseworth over the Scarecrow weekend, are looking for recruits who will train and march with them through Diseworth following the drums and the Flag Bearer. Pikes and muskets will be provided and there will be a 'pay parade' for all who join. Everyone wishing to join in is asked to be at the Village Hall field by 10am on Saturday 18th June. However there is a rumour that King Charles himself, with possibly a small troop of horses will be marching through the village calling for support to the Royalist cause.

***Which will you choose?***

*Nikki Hening*

# HERITAGE CENTRE OPENING



**Diseworth Heritage Centre is now open for the 2011 season.**

**As before it is open every Sunday, 2-4, with refreshments available.**

Opening at other times by arrangement.

Watch out for special events, especially the Civil War weekend organised by the Heritage Centre in partnership with the Parish Church. Join the Sealed Knot in a range of activities. More details shortly.

Our computer class continues to run every Thursday 10-12,

but check there is space.

*Martin Hening*

**Do you like ensuring that resources and people are used effectively? So do Businesses. Why not help them enjoy the benefits of the Diseworth Heritage Centre?**

- Here is your opportunity to
- use your existing skills and experience
  - share or gain new knowledge and skills
  - bring business and other opportunities to the locality

*“A local business wanted to hold a private viewing of their services and the Diseworth Heritage Centre was available – they just needed to be brought together”.*

**Wanted Three Volunteer Management Officers**

Phone: 0778 539 3578

Diseworth Heritage Centre  
Lady Gate, Diseworth, DE74 2QF

# WINGS

## Solar Panel Plans



Harold Wilson once dryly remarked that ‘a week in politics is a long time’. Right now events are moving so fast in Diseworth that a week is more like a lifetime.

Last month we advised that there was a plan afoot to develop agricultural land close to the village. That’s all we knew. Everyone must, by now, be aware of the scheme. Talk of solar panels will be ‘old hat’ by the time you read this piece and there will have been another three weeks of activity undertaken since then. No doubt things will have moved on a lot further.

*So, what have we learned?*

Thanks to the hospitality of the Parish Council and the Village Hall, on 17<sup>th</sup> February some 100 villagers learned that the Airport [EMA] were thinking of building a solar panel farm on the northern edge of the village. We didn’t learn much more, details were sketchy. But EMA learned that we, as a village, weren’t impressed with the scheme. On 2<sup>nd</sup> March EMA came down the hill again to the Heritage Centre this time, to talk to the village. A very impressive 110 people eagerly arrived to talk to the Airport and 110 depressed people departed, equally unimpressed by the sparse detail available and with few of their many concerns, if any, allayed.

EMA went back up the hill with a very clear indication of where this united and wonderful community stands on this proposal. No, nein, non – which bit don’t you understand? The village made clear that its opposition is more steadfast than was General De Gaulle’s stalwart refusal to allow the UK to join Common Market back in the ‘60s. If we didn’t learn much from EMA then, what do we know? We know that EMA lodged official papers with NWLDC on 10<sup>th</sup> Feb – a week before their first visit to us and 20 days before their second – these papers contain significant detail that they seemed reluctant to share with us face to face.

**They reveal that the site will cover 9.4 hectares. [size of Twickenham Rugby Ground].**

**The field will contain 22,000 – yes, *twenty two thousand*, solar panels. They will be arranged like regimental soldiers on a Crimean battlefield.**

**The solar panels will be 2.04 metres high [6ft 8ins].**

**Security fencing will be 2.4 metres high [7ft 8ins].**

**There will be 6 buildings on the site. Each one 3 metres high [9ft 9ins].**

**The site will be banked up around the perimeter, especially next to properties.**

We learned a lot more at NWLDC, Coalville, but the above is sufficient for this article. This will not be a pretty place to behold, it's perhaps not surprising that they underplayed their hand a bit at the meetings!

*So what are we doing?*

Lots is the answer, and we have the capacity to do it. We have never known the village more united on a single issue and we have strength in depth as a community, we have the hearts and we have the minds. We have the energy and we have the application. We have a publicity machine. It works on the basis that bad decisions make good stories. We have an environmental argument. We have a location argument. We have a financial argument. We have an aesthetic argument. We have an alternative plan to achieve the carbon savings EMA wish to make. We have a Planning argument. We have a strategy and we are being careful as to how we deploy it.

*Can we win this argument?*

Well, let's not get ahead of ourselves. At the moment EMA have been clear to point out that they are at the early stages, no decisions have been made, no

Planning Application has been submitted and EMA are 'consulting' with villagers. [This might all have changed by 1st April, when the *Dialogue* is published, an appropriate date perhaps!]. As of today, early March, we are only boxing shadows. It might yet be that EMA take a different view to the one they've been considering and the problem then goes away all on its own.

The answer to the question has to be yes, we believe we have a strong case. But it's too early to even ask it.

Right now, as the Ferret would say, 'be prepared'. That is what we – with your help and support - are doing in WINGS. If and when 'events' move forward we will need to move fast. If a Planning Application is lodged then the rules these days say that there are 21 days to respond. The WINGS submission will be ready. We will circulate the maximum notice that we can to the village so that others can also respond if they so wish. There is strength in numbers. We will also help people to make a submission if required and will circulate our suggestions at the appropriate time. We now have a very substantial number of people on email through which we're able to keep you updated. If you wish to be included just sent an email to the contact below.

Web Site [www.wingsdiseworth.org](http://www.wingsdiseworth.org)

Facebook [www.facebook.com](http://www.facebook.com)

WINGS Diseworth

A Twitter <http://twitter.com/>

WINGSDiseworth

Contact [sneejim@live.co.uk](mailto:sneejim@live.co.uk)

# ITV Central Comes to Diseworth

On 8<sup>th</sup> March, intrepid reporter Rajiv Popat, from ITV Central News, paid a visit to the Independent Republic of Diseworth. Passport in hand, he was here to learn about villagers' concerns over the proposed plan to build a solar panel farm on our immediate doorstep.

Once he had cleared Customs, Rajiv set to work with his camera, his charisma, his patience

and the consummate and professional skills that travel with all the best journalists. A full one and a half hours on a cold but sunny morning were



taken talking to, and filming, villagers at the Birches and Bleak House before he pronounced himself satisfied.

The result was a feature of nearly two and a half minutes on Central News at 6pm on the day, repeated again with the main ITV News programme at 10pm.

The skill of the piece was in the way Rajiv edited it once he got back to the studio. He made it interesting to the casual viewer and managed to include many of the concerns that villagers have over this project. At the same time the views of the developers – the Airport – were given a fair hearing also.

The performance of those who took part is to be congratulated, Alison Evans and Carly Snee clearly have a budding television career ahead. Emmerdale, here we come!

As for Rajiv? Well, he and his colleagues back at ITV Central HQ are to be thanked and Rajiv himself has been declared an Honorary Citizen of our great metropolis.

*Jim Snee*



# Art and Craft Club

Is anyone out there interested  
in a morning once a week/  
fortnight/month doing arty  
and crafty things?



You could learn new skills (rag rug making, patchwork, wood carving - anything we can do ourselves or get someone to show us). Or, you could just come along and bring your knitting or your painting and have a cup of coffee, a biscuit and a chat.

If this appeals to you (and children most welcome if you are a mum), come along to an introductory session at the Village Hall on Tuesday April 12th at 10.30am. Alternatively, if you are interested but can't make the meeting, give me a ring: Shirley Briggs (01332 812350).

Don't forget your knitting, your paints, or whatever you're making!

Lynne and Carly invite you to join them

For *Tea & Cakes* at the Village Hall

Saturday April 9<sup>th</sup>

2.30-5pm

Home-made produce for sale, sweet and  
savoury. Orders taken.

Please come and sample delicious fayre!

Buy and freeze for Easter!

Warm welcome waiting for you and  
your friends



*Donation to the Air Ambulance*

# Diseworth Village Hall

## Ballroom & Latin

Taster session

Come & learn how to do the  
Waltz & Cha-Cha  
No need to bring a partner  
Sunday 17<sup>th</sup> April 7:00pm – 9:00pm  
£3 per person  
Max 30 places



Please book your place on [www.diseworthhall.org](http://www.diseworthhall.org)  
or call - Jane Cunningham 818758

# Diseworth Village Hall

## Beetle Drive

Fun for all the Family  
Friday 15<sup>th</sup> April 6pm – 8pm  
Entry £1 per person  
Children from 5yrs upwards  
**Why not bring Grandad and Grandma as well?**  
Doors open 5.45pm  
Light refreshments  
also available



# Retired Residents Spring Lunch

Tuesday 17<sup>th</sup> May 2011

Village Hall

1pm

£2 per person

Booking – Nikki 853647



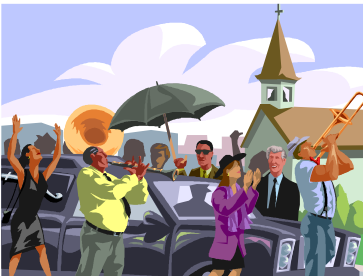
All Saints Church Long Whatton

PRESENT

## *An Evening of Jazz*

by

### *New Orleans Heat Jazz Band*



Friday 20<sup>th</sup> May

7.30pm

Tickets £8.00

Long Whatton Post Office

On the door

01509 842234

# DIALOGUE DISPATCHES



## Long Whatton and Diseworth Cub Pack

Long Whatton Baptist Church  
Main Street, Long Whatton  
6.30pm -8pm

For Boys and Girls 8yrs - 10yrs  
Contact: Jenny Laws 01509  
842593

### Meeting Dates

Monday April 4th, 11th, 18th

## The Plough Inn

GENERAL KNOWLEDGE

### Quiz Night

6th April, 4th May

1st WEDNESDAY of the month  
Entry £1 each person, maximum of  
four in a team, first prize is half a  
gallon of beer, other prizes as well,  
including Sunday Lunch for two.  
Entry to the quiz includes a snack  
at half time.



The Mobile Library visits  
Diseworth on the

1st and 15th April

The Bowley 11.55 - 12.15  
Clements Gate 12.20 - 1.20

The contact number for the  
mobile library is  
0116 3053565



## Long Whatton and Diseworth Scout Troop

Meets on Fridays

Long Whatton Methodist Church  
Main Street, Long Whatton  
6.30pm -8.30pm

For Boys and Girls 10 - 14yrs

Contact: Jenny Laws 01509 842593

### Meeting Dates

Friday April 1st, 8th, 15th

## Pennline are looking for a part time sales administrator.

A good telephone manner and an  
interest in sales are required, and the  
position will include all aspects of sales  
administration.

Please send your CV to:

Victoria Britton

Pennline

8 Clements Gate

Diseworth

Derby DE74 2QE

## Flower Workshops in Diseworth Village Hall

2-4pm

April 2<sup>nd</sup>, April 16<sup>th</sup>,

May 14<sup>th</sup>, May 28<sup>th</sup>,

June 11<sup>th</sup>, June 18<sup>th</sup>

£5 a class

Contact Iris Tebbutt on  
01332 810182 for more details  
or to book a place.



# DIALOGUE DISPATCHES

## **Congratulations to Long Whatton Post Office**

Long Whatton Post Office are proud and pleased to announce they have been awarded a 5 star food hygiene rating by North West Leicestershire District Council, in conjunction with the Food Standards Agency.

This is the highest rating awarded by the organisation.

### **News from the Beat:**

You'll be glad to know there were no crimes reported from Diseworth to the police in the month of February. But I just want to let you know there have been several 'theft from motor vehicles' in Kegworth where work vans have been targeted and tools have been taken. I advise owners to be extra vigilant at this time. Also to let you know I am holding a beat surgery in Diseworth on Wednesday 6th April from 10am-12 noon. I will be positioned near to the village hall.

PCSO 6178 Nicola Stanhope

Kegworth Police Beat Team

Leicestershire Police

External 01162 222222

<http://www.leics.police.uk>

[nicola.stanhope@leicestershire.pnn.police.uk](mailto:nicola.stanhope@leicestershire.pnn.police.uk)

### **Women's Afternoon Discussion Group**

**April 4<sup>th</sup> Are the baby boomers the blessed generation?**

9 The Woodcroft by kind invitation of Trisha Thomas

**May 2<sup>nd</sup> The Royal Wedding**

20 Clements Gate by kind invitation of Carly Snee

We welcome updated adverts from Plumb Assist and The Royal Oak at Long Whatton to our Yellow Pages.

## **Long Whatton Village Shop**

### **Easter Opening times:**

Fri and Sat as usual  
Easter Sunday Closed  
Easter Monday 9am-11am

If you have items for the MAY ISSUE of the *Dialogue* please give to a committee member or email to [peggy.tudor@btinternet.com](mailto:peggy.tudor@btinternet.com) [sue@cbrompton.fsnet.co.uk](mailto:sue@cbrompton.fsnet.co.uk) and [ruth@airnig.co.uk](mailto:ruth@airnig.co.uk)

There is **NO CHARGE** to put items into the magazine - (except the yellow pages).

Please share with us your stories and announcements.

**PLEASE MEET THE DEADLINE of the 7<sup>th</sup> April.**

### **Mother's Day Baskets**

Castle Donington and District Flower Club invite you to Diseworth Village Hall for a FREE Flower Arranging Class on Saturday 2<sup>nd</sup> April 10.30am – 11.30am

to make your own Mother's Day basket of flowers.



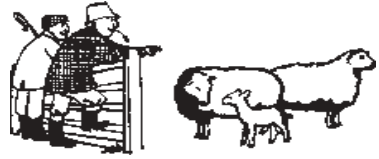
All materials provided .. it's fun and free just bring your scissors.

Any age and sex welcome. To help us to estimate the flowers

required and to book a place please phone 01332 810182.

**Extra copies of the Diseworth Dialogue will be on sale in both The Plough and The Bull & Swan and also in Long Whatton Post Office**

# LONG WHATTON & DISEWORTH PARISH COUNCIL NEWS



At the March meeting there was discussion in open forum about possible measures to deal with types of crime occurring in Long Whatton. This will be on the agenda for the next meeting.

The Council also received a report from representatives of WINGS about the current activity in response to the Airport's proposals for a field full of photo voltaic cells in Diseworth. There had been a very well attended event at Diseworth Heritage Centre the previous day and WINGS had estimated that there would be virtually 100% opposition to the proposals in the village. The Council said that, upon the receipt of any planning application, it would call a public meeting in Diseworth. There would be co-operation to help to respond effectively to the proposals.

In a written report the police had advised that there had been no crime in the Parish in February. A Beat Surgery would be held on 6<sup>th</sup> April in Diseworth - 10am to 12noon near the Village Hall.

Councillor Cawdell said that a team of volunteers had now taken on the production of Long Whatton News and its future was now more assured.

It was noted that the Elections to the Parish Council were now imminent and intending candidates must submit their nomination forms not later than 12noon on 4<sup>th</sup> April. The Parish Council website - [longwhattondiseworth.org.uk](http://longwhattondiseworth.org.uk) is kept up to date with the latest information and there is an Election Helpline - 01530 454512. The last date to register to vote or get a postal vote is 14<sup>th</sup> April. Councillor Tom Wilkins was put forward as a nominee to fill a vacancy on the Governing Body of Long Whatton school.

It was agreed to make representations to oppose the worrying intention to close the pharmacy at Belton Surgery.

The vegetable growing season is now under way and the Council remains frustrated by the long delay in completing the legal process to acquire the

allotment site. Proposals were considered to assist with the future management arrangements for the Millennium Meadow. Discussions will continue.

Many opportunities are becoming available for Councillors to learn about all the new initiatives - localism, the Big Society and so on. Two Councillors will be attending a seminar on this subject.

*Douglas Maas, Parish Clerk*

Telephone: 01530 242534

email: [longwhatdisepc@hotmail.com](mailto:longwhatdisepc@hotmail.com)

[www.longwhattondiseworth.org.uk](http://www.longwhattondiseworth.org.uk)

### **PARISH COUNCIL MEETINGS**

**Thursday 7th April 2011**

**Annual Parish Meeting 7.15pm**

Parish Council Meeting, 7.30pm

(or following the Annual Parish Meeting if later)  
at Diseworth Village Hall, Hall Gate.

Thursday 19 May 2011 7:30am

Long Whatton & Diseworth Parish Council Annual Meeting  
7.30pm at Long Whatton Community Centre, The Green.

---

## **MAY MARKET CAKE STALL**

The CDVB is running a home made cake stall at this years May Market, specialties include home made brownies, cupcakes and banana loaf. In addition we will be running the "Where does Teddy live" game which involves trying to guess where Teddy lives in the village, every body who would like a go gets to choose a specific place on the map where Teddy might live, then at the end of the day the winner gets the Teddy!

The Community Bus will also be present and we will be hoping we can encourage some people to volunteer drive for us, perhaps one day or one half day a month. All proceeds raised will go to the continued running of the CDVB and all the services we provide and support.

*Claire Shaw-Mues*

Castle Donington & District Volunteer Centre

Tel No: 01332 850526

Fax No: 01332 850526

Email: [claire@cdvb.org.uk](mailto:claire@cdvb.org.uk)



# HEALTH PAGE

## Fantastic Figs



Figs are a very nutrient packed food and have a long history of health benefits. Most figs eaten here are dried. Fresh figs are delicate and bruise easily, so don't travel too well. They are an excellent source of insoluble fibre which helps the movement of food through the digestive tract. Figs also contain pectin, a soluble fibre, which can help to reduce cholesterol levels in the blood. High in simple sugars and minerals, figs are a real super food. They are a good source of potassium, calcium, magnesium, iron, copper, manganese and vitamin B1 and B2.

Surprisingly, 100grams of figs contains 250 milligrams of calcium while 100grams of whole milk contains only 118milligrams. The high fibre content of figs is thought to help to prevent bowel cancer by encouraging swift transit of toxic material through the gut. Research has also indicated that consuming figs regularly seems to lower the risk of post menopausal women developing breast cancer. In fact tests in Japan have shown that both extract of figs and the fig compound benzaldehyde have helped to shrink tumours in humans.

Figs also have anti-ulcer, antibacterial and anti-parasitic powers. As well as helping to keep the bowel healthy, figs are also an alkaline food which can help to maintain a healthy PH balance in the body. But of course their biggest claim to fame is as a laxative. A handful of dried figs will usually have a laxative effect, while syrup of figs is a traditional remedy for constipation. Caution is recommended as eating too many figs can cause diarrhoea and their high sugar content may contribute to tooth decay. They can also be prone to mould, so it is best to keep them in the fridge once the bag is opened.

*Liz Jarrom*



# Mantle Arts Mosaic to feature Diseworth



MANTLE COMMUNITY ARTS is a participatory arts organisation which creates arts projects, festivals and events and manages public art commissions. The organisation has been commissioned by East Midlands Airport to produce a series of sculptures around the Airport Trail. Mantle Arts appointed Suralent Asian Arts to produce the 4<sup>th</sup> sculpture.

This will be a spiral design in concrete and mosaic with the mosaics being produced by a selection of villages around the airport. Zahir Shaikh is responsible for the work and he



came to the Heritage Centre to work with a group of residents to produce the mosaics.

It is an exciting project, first making a drawing, then cutting and placing tiny glass

chips from a huge selection of colours to construct the picture. Once the chips have been glued to the paper, the work of grouting and polishing will be undertaken. The finished product is waterproof and the whole sculpture will be launched in the summer.

The idea of making a personal mosaic has been well received and it is hoped to hold a set of classes at the Heritage Centre in the near future.

*Nikki Hening*

Art on the Trail is an arts and community engagement project that seeks to create positive, long lasting links with community groups and schools, while developing art pieces that are accessible to the public. The project was introduced in 2005 and 'Trail of Life' will be the fourth sculpture to be located along the airport trail which is located around the 6 mile perimeter of the airport.

Hannah Borkett, Community Relations Executive at East Midlands Airport said: *"We are delighted to be working with local community groups on the latest sculpture and are thrilled with the results from the workshops"*.

# Top 10 April Fools



It's April Fools Day once again and while you're watching out for classic gags like covering the toilet with clingfilm, it will also pay to take everything you read in today's papers with a pinch of salt. The British media loves a good April Fools hoax more than anyone and we've picked 10 of our all-time favourites.

## 1. The Swiss Spaghetti Harvest

One of the most famous, and most successful, April Fools of all time. In 1957 the BBC broadcast an item on Panorama stating that, due to the mild winter that year, Switzerland was expecting a bumper spaghetti harvest. The accompanying film purported to show Swiss farmers pulling strings of spaghetti from trees. The BBC was inundated with calls from viewers wanting to know how they could grow their own spaghetti trees, only to be told cheekily that they should "place a sprig of spaghetti in a tin of tomato sauce and hope for the best."

## 2. The Guardian's San Serriffe hoax

In 1977 The Guardian went to impressive lengths for its April Fools Day hoax, producing a seven-page pull-out which appeared in the paper describing the wonders of San Serriffe, a collection of semi-colon shaped islands in the Indian Ocean. The Guardian's phones rang off the hook all day with readers wanting to know more about this idyllic paradise, with very few picking up on the fact that all the names mentioned related to print terms or type fonts – the country's main islands were named Upper and Lower Caisse, while San Serif is a type font. This article is widely credited as sparking the tradition of British newspapers printing hoax stories on April Fools Day.

## 3. The Left-Handed Whopper

In 1998 Burger King scored a big April Fools Day story with its full-page ad in USA Today for the left-handed Whopper. Stores were inundated with requests for the new burger, which boasted the same ingredients as the regular Whopper, just with all condiments rotated 180 degrees for the benefit of left-handed customers.

## 4. Patrick Moore's gravity hoax

Astronomer Patrick Moore announced on Radio 2 in 1976 that a once-in-a-lifetime astronomical event would take place at 9:47am that day. He claimed that due to planetary alignment, the Earth would experience decreased gravity at this moment and listeners who jumped in the air at the right time would experience a 'weightless' feeling. The BBC was again flooded with calls from listeners claiming to have experienced the event, with one woman even reporting that she and 11 friends had actually floated around the room!

## 5. Branson's UFO

Virgin boss Richard Branson came close to achieving a spectacular April Fools hoax in 1989. Thousands of motorists around London had reported seeing a flying saucer travelling low over the countryside and landing in a field on the outskirts of the capital. Police arrived on

the scene with one brave officer approaching the vessel with his truncheon in hand, however, when the craft opened and a silver-suited man hopped out the policeman ran for his life. The silver-suited invader turned out to be Branson himself in a hot air balloon designed to look like a flying saucer – he'd planned on landing the craft in Hyde Park on April Fools Day, but due to bad weather had been forced to land early on the day before.

## **6. The BBC's flying penguins**

On April Fools 2008, the BBC came up with one of the most convincing hoaxes of recent times. Claiming that its cameras had caught penguins flying through the air while filming in the Antarctic, it broadcast a remarkably convincing video of the penguins in full flight. Although the story of penguins becoming fed up with sitting out the winter and instead flying off to South America for some tropical sun was a little far-fetched, the hoax video became one of the most-watched of all time.

## **7. Body of Nessie found**

What started out as a rather macabre prank on his colleagues by an employee of Flamingo Land in Yorkshire, caused a nationwide media frenzy. A team from the park were in Loch Ness searching for signs of the monster and a colleague arranged to have the frozen body of a dead bull elephant seal dropped in the Loch as a joke. The team duly found it and believed they'd discovered the body of Nessie. The police chased down the team's truck, believing they'd broken the law by transporting the creature and brought it to Dunfermline to be checked out. It was then that the hoax was exposed and the embarrassed employee had to admit to his trick.

## **8. The Sydney Iceberg**

On April Fools Day 1978 the inhabitants of Sydney, Australia, woke up to quite a sight as they found what appeared to an enormous iceberg being towed into the harbour. Millionaire local businessman Dick Smith had been touting his plan to tow an iceberg from Antarctica to be broken down and used as superior ice in drinks for some time. The media followed the iceberg's progress but the hoax was exposed when it began to rain and the iceberg began to wash away, exposing Smith's 'iceberg' as being made from plastic sheeting covered in shaving foam!

## **9. Big Ben goes digital**

At the height of digital watch-mania in 1980, the BBC announced that in a bid to keep up with technology, London's Big Ben would be replaced with a digital clock. The station was besieged by complaints from angry listeners and the BBC's Japanese service even broadcast a competition offering the first caller the chance to win Big Ben's now-defunct arms!

## **10. Internet closed for spring cleaning**

An email, purporting to come from the Massachusetts Institute of Technology, circulated the globe in 1997 warning that users should log off the internet on April 1st as it would be closed down and cleaned of 'electronic flotsam and jetsam'. It was in fact an update of an old April Fools hoax regarding the cleaning of telephone lines. Some years ago phone users had been warned to place plastic bags over their receivers in case dust was blown out of the handset while cleaning of the lines took place.

# Diseworth Facebook Group Relaunched

Some three years ago, Debora Jepson created a Diseworth facebook group which soon attracted a following of over 80 people sharing the pleasure of living in our village. With Debora's blessing, the group has now been relaunched with links and news from the Dialogue and many other village groups.

The Diseworth Facebook Group now has 95 members and new content, with Discussion Topics and links relating to a range of Diseworth organisations and interest groups including the Diseworth Dialogue (where you can read the latest issue and archived issues back to March 2005), Village Hall, Church, History, School, Pubs, Heritage Centre and much more (just click "Discussions" to see them all). If you are involved in a Diseworth activity and would like to share information about it, just add it as a Discussion.

The group also has an online version of the **Diseworth Dialogue's Recycle Bin**. Why not take the opportunity to recycle some things you no longer need, or pick up some free bargains from somebody else who is doing the same? At the time of writing, there are a number of items being offered for free including a cycling helmet, a dog collar and a mobile phone. Just click on "Discussions", then click "Dizzie Binn - the Dialogue Recycle Bin".

If you have friends or relatives across the world who like to keep in touch with what's happening in Diseworth, why not point them to the group?

The group is simply called "Diseworth" – just type that into your Facebook search box, join the group and join in the fun. Thanks to Debora for getting this all started in the first place.

*Mike Doyle*

---

## Sudoku Solution

from page 25

3	4	6	2	5	7	8	1	9
1	7	2	9	8	6	3	5	4
8	9	5	4	1	3	6	7	2
7	3	9	5	6	1	4	2	8
4	2	8	3	7	9	1	6	5
5	6	1	8	4	2	9	3	7
9	1	3	7	2	4	5	8	6
6	8	7	1	9	5	2	4	3
2	5	4	6	3	8	7	9	1

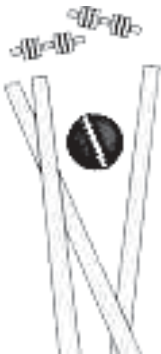
# Long Whatton Cricket Club News

With the 2011 season almost upon us the senior and junior squads have been honing their skills and fitness at winter nets.

The 2010 season saw mixed fortunes for the teams, both 1<sup>st</sup> and 2<sup>nd</sup> XIs being relegated following last season's promotion, however the junior sides continue to perform exceptionally well in the Leicestershire and Derbyshire leagues. Club Captain, Alex Lester, drew great encouragement from the performance of the many junior players who are now featuring regularly in the senior sides which bodes well for the future.

The annual President's Day fixture brought the season to a fitting climax with a result that kept the crowd enthralled to the last ball, Jack Foster scoring the winning runs.

The season starts on 30<sup>th</sup> April with the 1<sup>st</sup> XI away to Risley and the 2<sup>nd</sup> XI at home to Willoughby on the Wolds.



On Sundays we play host to a variety of touring sides in friendly fixtures which give our talented young players the opportunity to experience senior cricket.

We have a full schedule of fixtures for our junior squads at U10, U11, U13, U15 and U17.

Junior registration evening will be at the ground on Tuesday April 19<sup>th</sup> 2011. All junior players welcome from age 7 upwards

Our junior cricket festival, now in its sixth year, will be held again in August with over 150 boys and girls from throughout the area competing.

On 2<sup>nd</sup> May we will host a girls U13 County game between Leicestershire and Nottinghamshire.

Social events include the Jazz/Soul outdoor concert in July and Matt Trigg's band in August.

The clubhouse will be open every Friday evening from April for playing and social members and their guests.

So, with a very full and exciting season in prospect, the members' handbook will be available shortly with a list of all the fixtures and social events.

We always welcome new members be they senior or junior players, or social members.

Contact Lawrie Anthony, 01509 844368, for details.



# “Recycle Bin”

Have you got things, in the loft, the cupboard, the spare room, the shed, that you no longer need?

You don't want to sell it on ebay and it's too good to take to the tip. The idea is that if you don't want it, someone else can make use of it.

Why not advertise it in 'Recycle Bin'

If anyone has more seeds or seedlings than they need in their own garden - why not advertise them in the 'Recycle Bin'

George Foreman;  
Lean, mean, fat reducing  
grilling machine.  
Used only a couple of times.

As good as new.  
Contact Hannah on  
07917 337225 or  
[hvbriggs@hotmail.com](mailto:hvbriggs@hotmail.com)

*Fill this space*

*advertise your unwanted  
items here for free*

It is **free** to advertise and you give your unwanted items away for **free**. Send a short description (max 50 words) of the item to the *Dialogue* and a contact telephone number or email address.

## EASTER SUNDAY

At The Plough Inn,  
Sunday 24<sup>th</sup> April 2011

**Enjoy a Traditional  
Sunday Lunch  
with the whole family.**

Special 2 or 3 course  
menu available



## MOTHERING SUNDAY

At The Plough Inn,  
Diseworth  
Sunday 3<sup>rd</sup> April 2011

**Treat your Mum to a  
Traditional  
Sunday Lunch**

Special 2 or 3 course  
menu available



BOOK EARLY TO AVOID DISAPPOINTMENT

## Directory of Useful Numbers

BBC East Midlands	0115 9021930	<a href="mailto:emt@bbc.co.uk">emt@bbc.co.uk</a> <a href="http://www.bbc.co.uk/england/eastmidlandstoday/">www.bbc.co.uk/england/eastmidlandstoday/</a>
BBC Radio Derby	01332 361111	
British Gas - Engineer	0800 111011	<a href="http://www.britishgas.co.uk">www.britishgas.co.uk</a>
Emergency	0800 111999	
Castle Donington Community College	01332 810528	<a href="http://www.castledonington.leics.sch.uk">www.castledonington.leics.sch.uk</a> <a href="mailto:postroom@castledonington.leics.sch.uk">postroom@castledonington.leics.sch.uk</a>
Castle Donington Volunteer Bureau	01332 850526	<a href="mailto:mail@cdvb.org.uk">mail@cdvb.org.uk</a>
Chemist, Gerald Porter, Castle Donington	01332 810213	
Derby Playhouse	01332 363275	<a href="http://www.derbyplayhouse.co.uk">www.derbyplayhouse.co.uk</a>
Diseworth C of E Primary School	01332 810208	<a href="http://www.diseworthprimary.co.uk">www.diseworthprimary.co.uk</a>
Doctor's Surgery –		
Health Centre, Castle Donington	0844 477 3092	
Orchard Surgery, Kegworth	01509 674919	
Manor House Surgery, Belton	01530 222368	
East Midlands Airport	0871 919 9000	<a href="http://www.eastmidlandsairport.com">www.eastmidlandsairport.com</a>
East Midlands Electricity emergencies	0800 056 8090	
Environment Agency	08708 506 506	<a href="http://www.environment-agency.gov.uk">www.environment-agency.gov.uk</a>
Incident hotline	0800 807 060	
Kinchbus	01509 815637	<a href="http://www.kinchbus.co.uk">www.kinchbus.co.uk</a>
London Road Community Hospital, Derby	01332 265500	<a href="http://www.derbyhospitals.nhs.uk">www.derbyhospitals.nhs.uk</a>
Loughborough Hospital	01509 611600	
Mobile Library	0116 3053565	
NHS Walk In Centre, Pinfold Gate, Loughborough, LE11 1BE	01509 553998	
NHS Direct	08 45 46 47	<a href="http://www.nhsdirect.nhs.uk">www.nhsdirect.nhs.uk</a>
North West Leicester District Council	01530 45454	<a href="http://www.nwleics.gov.uk">www.nwleics.gov.uk</a>
Nottingham Concert Hall	0115 989 5555	
Nottingham Playhouse	0115 941 9419	<a href="http://www.nottinghamplayhouse.co.uk">www.nottinghamplayhouse.co.uk</a>
Nottingham Royal Centre and Concert Hall	0115 989 5555	<a href="http://www.royalcentre-nottingham.co.uk">www.royalcentre-nottingham.co.uk</a>
Police	0116 222 2222	
Post Office - Long Whatton	01509 842264	
Post Office - Castle Donington	01332 810515.	
Queens Medical Centre, Nottingham	0115 924 9924	<a href="http://www.nuh.nhs.uk">www.nuh.nhs.uk</a>
Capital FM East Midlands (formally radio Trent)	Nottingham/Leics/Derby	
Station	0115 8731500	<a href="http://www.capitalfm.com.eastmids">www.capitalfm.com.eastmids</a>
News Room	0115 8731520	
Reel Cinema Loughborough	01509 235235	
Royal Derby Hospital	01332 340131	<a href="http://www.derbyhospitals.nhs.uk">www.derbyhospitals.nhs.uk</a>
accident and emergency	01332 783111	
Royal Derby Children's Hospital	01332 786899	
accident and emergency	01332 783277	
Severn Trent Customer Service	08007 834444	
Skylink	0115 9506070	<a href="http://www.skylink.co.uk">www.skylink.co.uk</a>
Traveline - for all public transport information	0871 200 22 33	<a href="http://www.traveline.org.uk">www.traveline.org.uk</a>

**If you have any suggestions for useful numbers to be included in this directory,  
please let any committee member know.**

The Neighbourhood Watch beat officer for Diseworth is Jason Underwood No. 1760.  
He can be contacted on 0116 248 5675 and then entering his number 1760.

# Village Directory

Organisation	Contact Person	Telephone No
Book Worms	Sandie Moores	01332 812629
Brownies	Charlotte Pass	07912 546681
Diseworth Village Hall	Dave Adcock	01332 850337
Flower Show	Village Hall Committee	01332 818758
Friends of Diseworth School	Meryl Tait	01332 812952
Guides	Sandie Clark	01332 814939
Heritage Centre	Martin Hening	01332 853647
History Society	Pat Guy	01332 811119
Millennium Meadow	Pat Guy	01332 811119
Neighbourhood Watch	Noel McGough	01332 811362
Scouts & Cubs	Jenny Laws	01509 842593
Soar Valley Twinning Assoc.	Sheila Hawksworth	01509 568793
W.I.N.G.S.	Erica & Andy Foxall	01332 811689
Women's Discussion Group	Liz Jarrom	01332 810358
Women's Group	Sheila Dakin	01332 810858

## Diseworth Village Hall [www.diseworthhall.org](http://www.diseworthhall.org).

If you would like to book the village hall please contact Dave Adcock.  
He will make arrangements for the provision of keys at the appropriate time.  
9 Page Lane, Diseworth. 01332 850337

## NEIGHBOURHOOD WATCH CONTACTS

### CO-ORDINATORS:

Noel McGough, 28 Lady Gate. 811362

Barry Smith, 18 Hall Gate. 812600

Sandie Moores, contact person for Lady Gate. 812629

Victoria Britton contact person for Clements Gate. 850184

## YOUR LOCAL PARISH COUNCIL

The role of your Parish Council includes safeguarding the amenities of the village, including highways, lighting, drainage, road signs and planning matters. Current planning matters are available for inspection by arrangement with the **Parish Clerk:**

**Douglas Maas, 86 Forest Road, Markfield LE67 9UN. Tel: 01530 242534.**

**Email: [longwhatdisepc@hotmail.com](mailto:longwhatdisepc@hotmail.com).**

Please visit the website at [www.longwhattondiseworth.org.uk](http://www.longwhattondiseworth.org.uk)

If you wish to discuss any matters of concern, please contact your Parish Councillors:

David Bamford,	43 The Woodcroft, Diseworth DE74 2QT	07802 817691
Sue Roberts,	Chapel Farm, Hall Gate, Diseworth DE74 2QJ	01332 810813
Derek Wiggins,	6 Clements Gate, Diseworth DE74 2QE	01332 810209
Andrew Cawdell,	58 The Green, Long Whatton LE12 5DB	01509 843273
Linda Downs,	12 Barnfield Close, Long Whatton, LE12 5BZ	01509 842117
Michael Downs,	12 Barnfield Close, Long Whatton LE12 5BZ	01509 842117
Thomas Wilkins,	1 Hathern Road, Long Whatton LE12 5DD	07521 461326

Parish Council meetings are held at 7.30pm on the first Thursday of each month, alternately at Diseworth and Long Whatton. Please see the Notice Boards or ask the Parish Clerk for current information or to make general enquiries about the Parish Council.